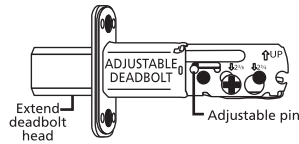


# ENTRY DOOR DECORATIVE HANDLESET INSTALLATION INSTRUCTIONS

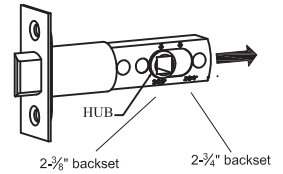
You have selected one of the decorative handleset types illustrated in these instructions. The exploded views show, at a glance, how your handleset is assembled. Please follow the step-by-step installation instruction to ensure proper installation.

**Note:** If your door is not pre-bored, go to Step 2 and 3 for preparing the door for passage latchset and strike.

**Note:** The deadbolt for this handleset has an adjustable backset. To set the backset on the deadbolt, pull the adjustable pin to the correct backset position (2-3/8" or 2-3/4"). Ensure the deadbolt head is extended throughout the installation procedure.

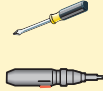


Latch has been preset to a 2-3/8" Backset. Only if you need a 2-3/4" backset Adjust the latch bolt to the correct backset (typically 2-3/8") by pulling the hub to the correct backset (2-3/8" or 2-3/4").



## TOOLS REQUIRED:

- Phillips screwdriver or power screwdriver



## ADDITIONAL TOOLS IF DOOR IS NOT PRE-BORED:

- Center punch
- 1/8" drill bit
- 3/8" drill bit
- 7/8" spade bit



- Wood chisel
- 2-1/8" hole saw



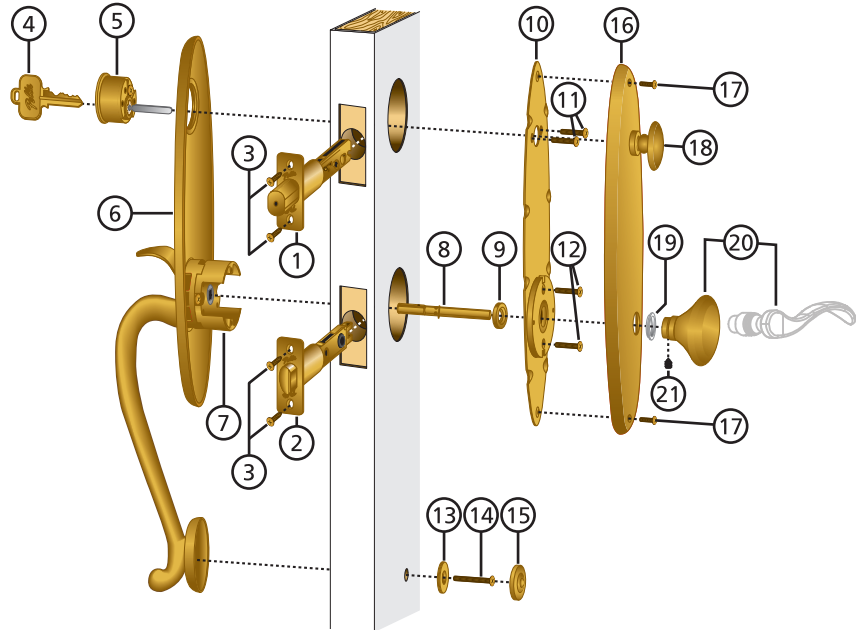
- 1" spade bit
- Drill



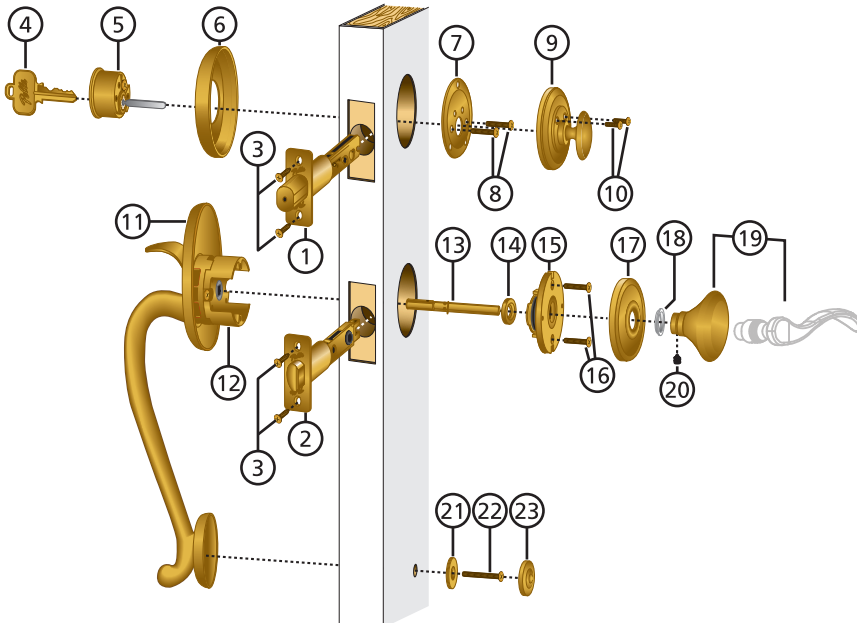
## PART IDENTIFICATION

- Adjustable deadbolt
- Latch
- Flat head wood screws
- Key
- Key cylinder
- Exterior handle assembly
- Turnpiece cartridge
- Spindle
- Spindle collar
- Mounting plate with adapter
- 2" Pan head machine screws
- 1-1/2" Flat head machine screws
- Screw cover washer
- 2-1/2" Flat head machine screw
- Screw cover
- Turnpiece trim
- 1/2" Oval head machine screws
- Turnpiece
- Plastic washer
- Knob/lever
- Set screw

## SINGLE CYLINDER HANDLESET (A)



## SINGLE CYLINDER HANDLESET (B)



## PART IDENTIFICATION

- Adjustable deadbolt
- Latch
- Flat head wood screws
- Key
- Key cylinder
- Cylinder backplate
- Turnpiece mounting plate
- 2" Pan head machine screws
- Turnpiece trim
- 1/2" Oval head machine screws
- Exterior handle assembly
- Turnpiece cartridge
- Spindle
- Spindle collar
- Adapter
- 1-1/2" Flat head machine screws
- Rosette
- Plastic washer
- Knob/lever
- Set screw
- Screw cover washer
- 2-1/2" Flat head machine screw
- Screw cover

# 1 HANDLE INSTALLATION

A. Using the marking template for handleset, mark hole E and drill 3/8" hole as specified.  
 Note: Even if your door is pre-bored you still need to drill this hole to secure the bottom of your handleset. Refer to Step 2C for additional information.

B. Install the deadbolt into the door panel. Insert the deadbolt with the up arrow pointing up and the head extended. Secure with two flat head wood screws.  
 Note: To extend the head of the deadbolt, insert a screwdriver into the "+" slot and rotate counter-clockwise.

C. Insert the latch into the door panel. DO NOT secure the latch at this stage.  
 Note: The curved side of the latchbolt must face the frame jamb.

D. Slip the spindle collar onto the long end of the spindle with the flat side of the collar facing the spindle e-ring.

E. From the interior of the door insert the spindle. Insert the short end of the spindle through the latch with the groove side of the long end facing down.

F. Place the exterior handle assembly into position. Holding the spindle in place from the interior, slide the turnpiece cartridge of the handle assembly onto the spindle.

G. Hold the exterior handle assembly in place and position the mounting plate/adaptor on the inside of the door. Drive two 1-1/2" machine screws through the adapter and into the turnpiece cartridge.

H. Secure the latch with two flat head wood screws.

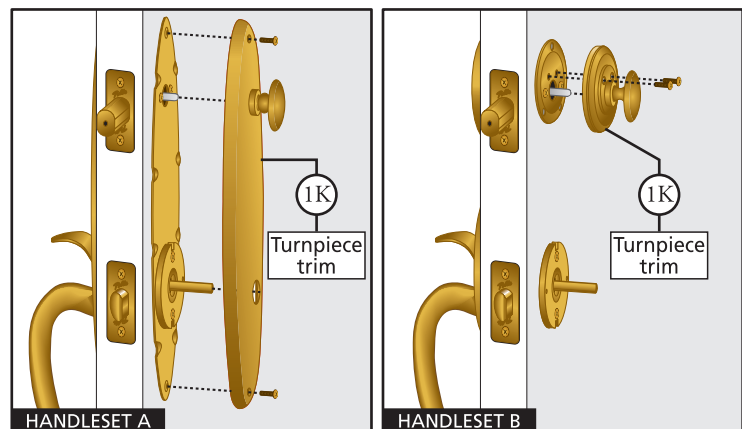
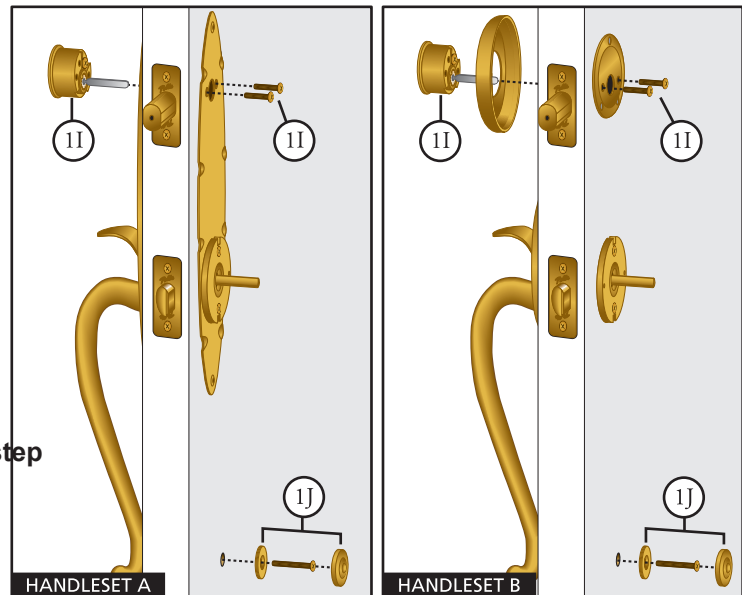
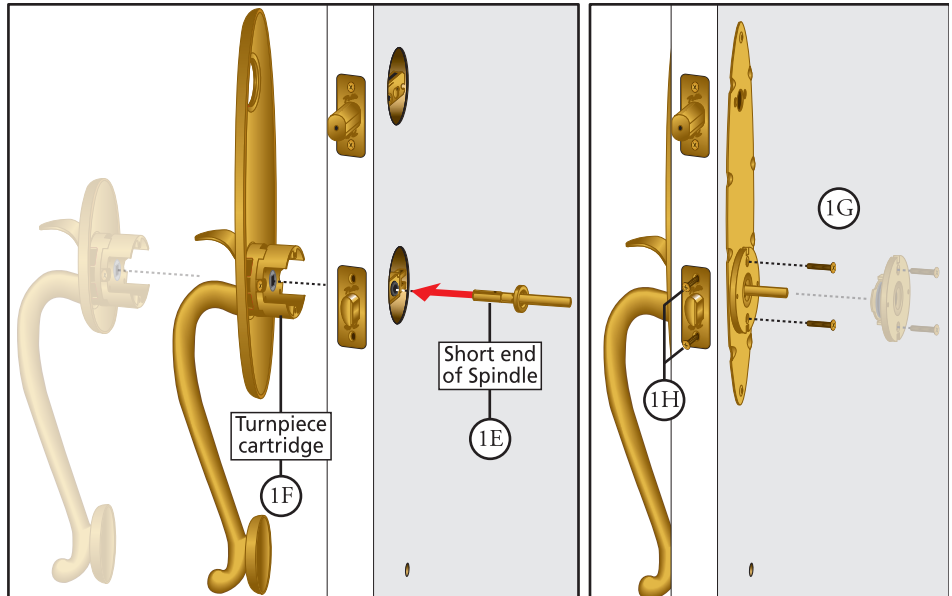
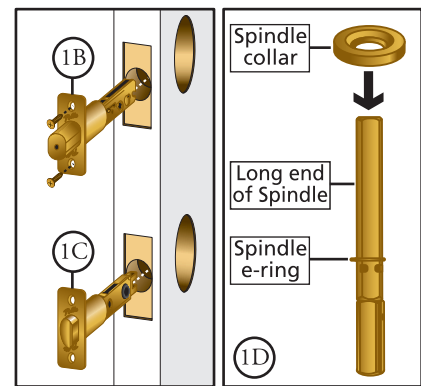
I. Install the key cylinder.  
 Handleset A: Keeping the tailpiece vertical, insert the key cylinder through the exterior handle assembly and into the "+" slot of the deadbolt. Secure the exterior cylinder by driving two 2" pan head machine screws through the mounting plate, deadbolt and into the exterior cylinder.

**\*\* Do not insert the key into the locking cylinder during this step**

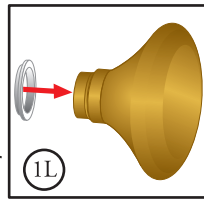
Handleset B: Keeping the tailpiece vertical, insert the key cylinder through the cylinder backplate and into the "+" slot of the deadbolt. Place the turnpiece mounting plate on the inside of the door and secure the exterior cylinder by driving two 2" pan head machine screws through the turnpiece mounting plate, deadbolt and into the exterior cylinder.

J. Remove the screw cover washer from the screw cover. Insert the 2-1/2" flat head machine screw through the chamfered hole in the screw cover washer. Drive the screw with the washer through the door and into the bottom of the exterior handle assembly. Tighten all screws.

K. Install the turnpiece trim. Position the turnpiece trim over the mounting plate, inserting the key cylinder tailpiece into the turnpiece. Secure in place by driving two 1/2" oval head machine screws through the two chamfered holes.



L. Place the plastic washer on the shank of the knob/lever.

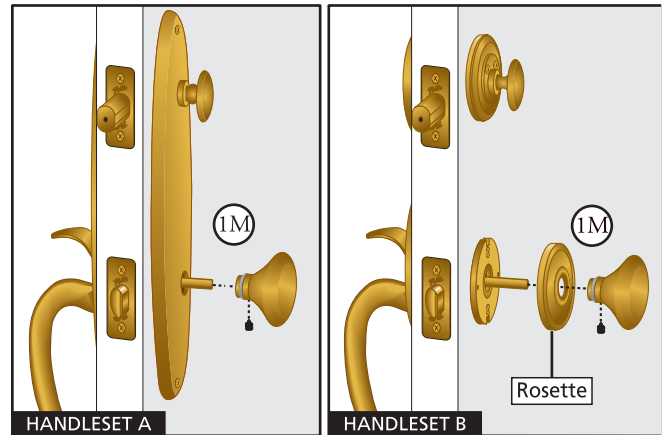


M. Install knob/lever.

**Handleset A:** Slide the knob/lever onto the spindle. Make sure there is not a gap between the knob/lever and the turnpiece trim plate. Insert and tighten the set screw with the allen wrench provided.

**Handleset B:** Snap the rosette onto the adapter. Slide the knob/lever onto the spindle. Make sure there is not a gap between the knob/lever and the rosette. Insert and tighten the set screw with the allen wrench provided.

N. Place the strikes and secure with the screws provided. See illustration for Step 3F for additional information.



## 2 PREPARING DOOR FOR HANDLESETS

Note: The following instructions are for doors that have not been pre-bored.

Note: To prepare the door for DUMMY HANDLESET perform Steps A thru B, excluding the door edge marking and boring.

A. Fold the marking template for handleset on the line and place on the door at the specified height (approximately 38" from the floor). Use a center punch to mark the hole locations on the face (A thru E) and edge (C and D) of the door panel.

**Caution: RE-CHECK bore hole locations BEFORE drilling.**

B. Drill the face bores and edge bores as indicated on the template.

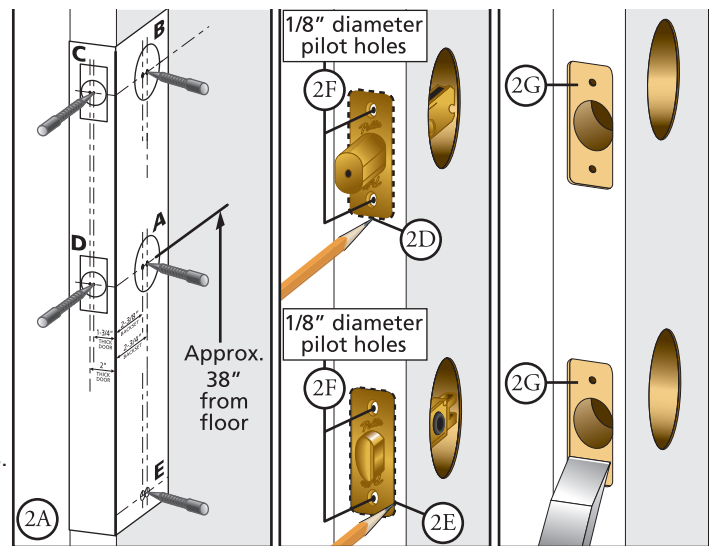
C. Drill the 3/8" lower pull assembly hole E as indicated on the template.

D. Insert the deadbolt into the edge hole C of the door. Trace an outline of the faceplate onto the door's edge and mark the screw hole centers.

E. Insert the latch into the edge hole D of the door. Trace an outline of the faceplate onto the door's edge and mark the screw hole centers.

F. At the screw hole marks, drill two 1/8" diameter pilot holes for the screws.

G. Chisel out the area marked in Steps 2D and 2E to a depth of 1/8" or until the faceplate are flush with the door's edge.



## 3 PREPARING DOOR FOR STRIKE INSTALLATION

A. Using the marking template for strikes locate and use a center punch to mark the strike mounting screws and centering points for both strikes at the required door thickness.

B. Align and trace the outline of both strikes onto the door frame using the mounting screw marks for location.

C. At the screw marks, drill 1/8" diameter pilot holes for the screws.

D. At the centering point mark, bore a 7/8" diameter by 1" deep hole.

E. Chisel the areas marked in Step B until the strikes are flush with the door frame.

F. Place the strikes and secure with the screws provided.

