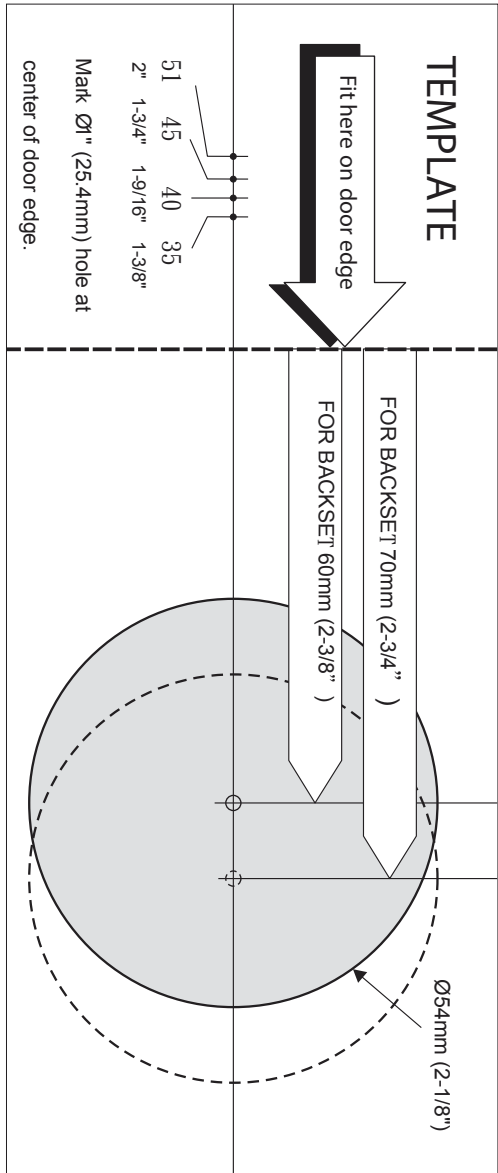


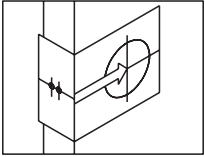
USER MANUAL



Attention : Please do not use the "electronic" screwdriver for installation.



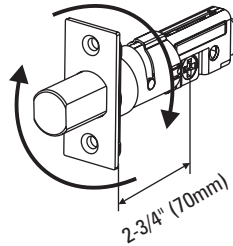
KEYPAD ELECTRONIC DEADBOLT INSTALLATION INSTRUCTIONS



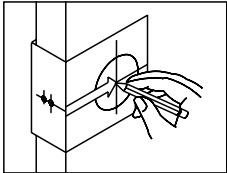
The BACKSET is the distance between the center of cross bore and edge bore of the door. Adjustable latch fits both BACKSET of 2-3/8" (60mm) and 2-3/4" (70mm). Please follow the steps shown below for BACKSET adjustment.

Latch Backset Adjustment :

Rotate the latch case as diagram on the right for backset 2-3/4" (70mm) or reverse direction for 2-3/8" (60mm).

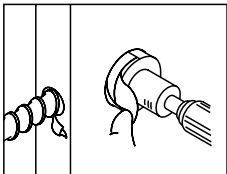


1. Mark The Door With Template



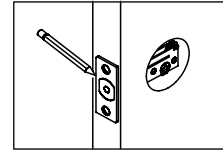
Select the height and backset as desired on the door face ; use the TEMPLATE as an indication to mark the center of the circle on the door face and the center of the door edge.

2. Drill Holes

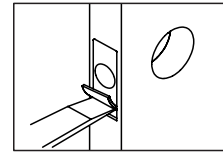


Using the marks as a guide to drill a hole \varnothing 2-1/8" (54mm) through the door face for the lockset, then a hole of \varnothing 1" (25.4mm) for latch.

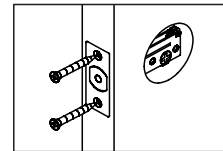
3. Install Latch



a. Insert the latch and ensure it is paralleled to the door face.
Mark the outline of the faceplate, then take out the latch.

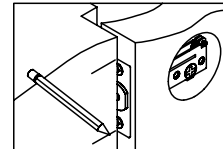


b. Chisel 1/8" (3mm) deep along the outline to allow the faceplate to be aligned with the door edge.

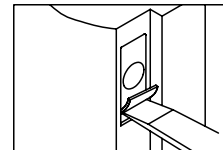


c. Insert the latch and tighten it with screws.
Note : please use tapping screws for metal door.

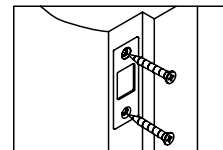
4. Install Strike



a. To identify the center of strike : close the door, on the basis of the faceplate mark horizontal center line of strike. Ensure the center of faceplate and the center of strike are aligned.
Use the mark as a guide outlines the strike.



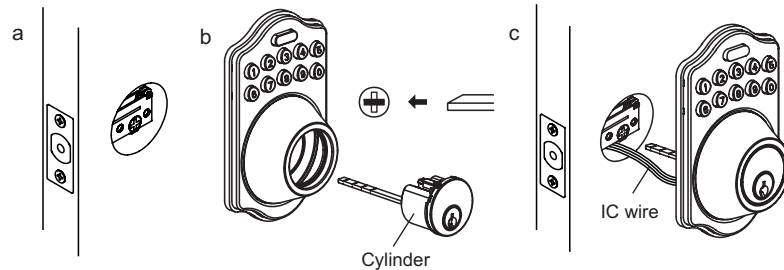
b. Chisel 5/64" (2mm) deep along the strike outline to allow the strike to be aligned with the doorframe.



c. Insert the strike and tighten it with screws.
Note : please use "tapping screws" for metal door.

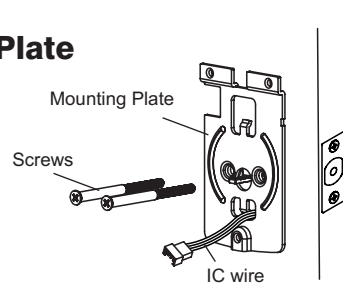
5. Install Keypad Assembly

- Ensure the latch bolt must be retracted.
- Please refer to the diagram below for Cylinder Installation.
Place deadbolt against keypad with tailpiece in horizontal position inserted through hub of the latch.
- Pass the IC wire under the latch to the interior side of the door.



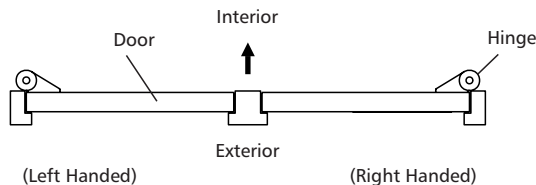
6. Install Inside Mounting Plate

Pass the IC wire through the wire hole of the mounting plate.
Fix the mounting plate with screws.
If outside lock assembly is lopsided, please loosen the screws to adjust it's position and tighten the screws again.



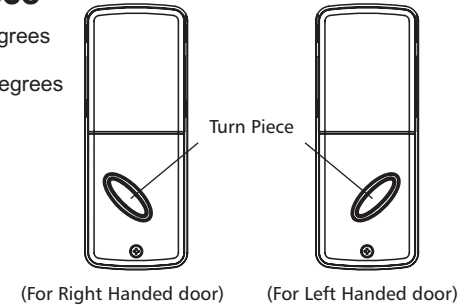
7. Identify Door Handing

Face the door from outside, the door is left handed if the hinge is on the left-hand side of the door, whereas the door is right handed if the hinge is on the right-hand side of the door.



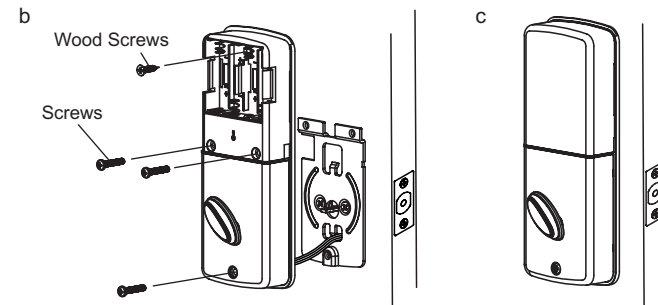
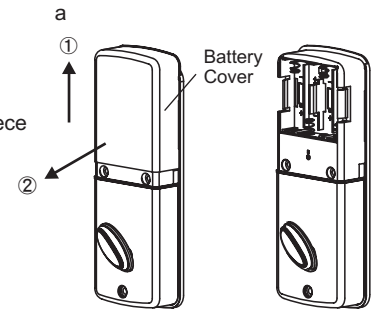
8. Adjusting Turn Piece

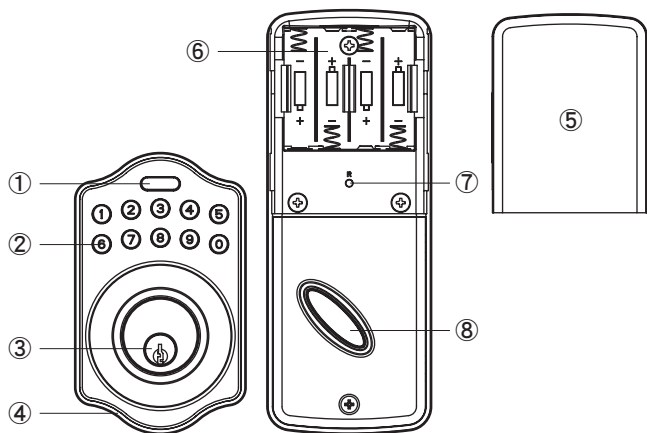
Turn the turn piece to left for 45 degrees when it's right-handed door.
Turn the turn piece to right for 45 degrees when it's left handed door.



9. Install receiver module

- Remove the battery cover (push it up and pull it out).
- Connect the IC wire and ensure the tailpiece is engaged with turn piece, then attach receiver module to the door with screws. It's optional to use wood screws. (Wood screws only for wood door)
- Insert 4 (AA) 1.5V alkaline batteries and put the battery cover back to the receiver module.





① Programming Button

Programming Button is for entering codes, clearing errors and setting function. It's also lock button.

② Number Buttons

Input the pass codes, each pass code is 4-10 digits in length.

③ Cylinder

Retract / Extend the latch bolt by key from exterior.

④ Washer

Prevent water permeating into lockset.

⑤ Battery Lid

Slide the lid to change the batteries or restore default setting.

⑥ Battery Holder

Four AA (1.5V) Alkaline batteries.

⑦ R Button (Reset)

Restore default setting.

⑧ Turn-Piece

Retract/Extend the latch bolt from interior.

■ Specification/Function

1. Battery

Four AA (1.5V) Alkaline batteries.

2. Low Battery

- 2-1 The batteries should be changed immediately once you see the LED flashes in red and hear constant beep sounds for about 10 seconds when press programming button.
- 2-2 All settings are retained in the memory and will not be affected even if the battery is completely dead.
- 2-3 The lock still can be operated by key even there is a power outage.

3. LED Indicator

- 3-1 LED flashes green once when successful operation.
- 3-2 LED flashes green twice when successful programming.
- 3-3 LED flashes red 3 times when there is an operation error.
- 3-4 LED flashes red 5 times when codes input error, the operation will stop for system protection (Refer to 17).
- 3-5 LED flashes orange 3 times when system has been restored to default setting.
- 3-6 LED flashes orange slowly while in programming mode.

4. Audio Indicator

- 4-1 1 beep sound indicates a successful operation.
- 4-2 2 long beeps indicate a successful programming
- 4-3 3 beeps indicate an operation error.
- 4-4 3 long beeps indicate that system has been restored to default setting.
- 4-5 5 beeps when codes input error, the operation will stop for system protection. (Refer to 17)
- 4-6 10 rapid beeps indicate the power of battery is low.

5. Programming Code

- 5-1 The preset Programming Code is 0000. Please delete it and create your personal code when first time operation.
- 5-2 Only one set of Programming Code for function setting.
- 5-3 Programming Code is only for function setting, you can't unlock the door by pressing Programming Code.
- 5-4 Programming code is 4-10 digits in length.
- 5-5 Programming code can be changed anytime if needed.

6. User Code

- 6-1 The preset User Code is 1234. Please delete it and create your personal code when first time operation.
- 6-2 Up to 6 sets of User codes can be saved.
- 6-3 User Code is only for activating the lock, without programming function.
- 6-4 User Code is 4-10 digits in length.
- 6-5 User Code can be deleted or changed anytime if needed.

7. Delete Individual User Code

- 7-1 User Codes can be deleted individually. You can reset the same number as code even it's deleted before.
- 7-2 You should enter Programming code to delete individual User code.

8. Delete All User Codes At Once

- 8-1 All the User Codes can be deleted at once. You can still reset the same numbers as codes even they're deleted before.
- 8-2 Auto-locking and Keypad locking function will be invalid after deleting all User Codes and the lock can only be operated by key. All the electrical functions will be restored when recreate new User Codes.
- 8-3 You need to enter Programming Code to delete all User Codes.

9. Temporarily Disable All User Codes

- 9-1 Auto-locking and Keypad locking function will be invalid when User Codes are temporarily disabled. The lock can only be operated by key during the time.
- 9-2 Repeat the programming steps again to restore the User Codes.

10. Create a Disposable User Code

- 10-1 Disposable User Code will be no longer valid once being used.
- 10-2 You can reset same number as Disposal User Code.
- 10-3 You need to enter Programming Code to create a Disposable User Code.

11. Restore Preset Factory Code

- 11-1 You can restore Preset Factory Code by pressing "R" button on the interior receiver module when you forget Programming Code or you want to cancel all previous setting.
- 11-2 After restore, the Programming Code would be 0000; the User Code would be 1234 again.

12. Unlock the door

The door will be unlocked by key or pressing User Code on keypad from outside or by interior turn-piece.

13. Lock the door

The door will be locked by key or pressing Programming Button on keypad from outside or by interior turn-piece.

14. Incomplete Door Closing / Opening

- 14-1 Once the latch bolt is not extended/retracted completely and causing a not functional motor operation when it's locked by keypad, you'll see LED flash red 3 times (for twice) and hear 3 beeps (No alarm when it's in mute). You need to enter User Code to unlock the door for remaining the bolt retracted, and press Programming Button to lock the door again.
- 14-2 If the latch bolt gets stuck or can't extend/retract completely all the time, please check if the strike aligns with the latch bolt perfectly and adjust the strike to proper position. After long use of the door hinge, the latch bolt might get stuck easily because the door is deformed or lopsided.

15. To Activate / Deactivate Auto-Locking Function

- 15-1 The door will automatically lock itself within 10~99 seconds when this function is programmed.
- 15-2 This function is not preset at the beginning; it can be set if needed.
- 15-3 The preset delay-time is 30 seconds; you can adjust the period you want.
- 15-4 Please repeat the same programming steps to cancel Auto-Locking function when needed.
- 15-5 The system will alarm twice if the latch bolt gets stuck or not extended/retracted completely.
You need to enter User Code to unlock the door for remaining the bolt retracted. The auto-locking function will be restored then.

16. Toggle Mute On/Off

- 16-1 You will hear beep sounds when pressing keypad, programming or operating errors. It can be turned off if needed.
- 16-2 LED Illumination is still functioning when it's in mute. For there will be no any warning alarm, we suggest not to mute the beeper if it's not necessary.
- 16-3 Motor operating sound cannot be muted.

17.Code Protection Function

The operation will stop if entering unauthorized codes over 5 times.
The System will re-operate again after 45 sec.

18.Illumination

The LED Keypad will light up when pressing any button for ease of operating in the dark.

■ Pass Code & Function Set up

1. It should be remained unlock while programming.
2. Please run the door-handing identifying process (Refer to programming table) before function set up when first time installation or default setting restore.
3. Please change default Programming Code (0000) and User Code (1234) before function set up when first time operation.
4. LED flashes orange slowly while programming. LED flashes green twice with 2 long beeps when correct input. LED flashes red 3 times with 3 beeps when incorrect input. (You need to wait for 6 seconds or press programming button when incorrect input, then re-program the system again.)
5. Every programming step should be done in 6 seconds.
6. You can lock/unlock this product by either key or pass code. Please refer to the following programming table for function set up.

■ Remark

1. We recommend to use alkaline battery in order to stabilize the power supply.
2. Do not mix alkaline battery with regular zinc-carbon ones or mixed brands.
3. Do not use any chemical liquid or lubricating oil with additives to clean the lock body, it will damage the surface or even mainboard.
4. If there is any problem of the product, please contact your local retailer and send back the product to us for repair or replacement.

■ Function Programming

Programming Code (PC)

USER Code (UC)

Detect Left / Right Hand Door Installation



Remark : Please run the door-handing identifying process before function set up when first time installation or default setting restore. It should be remained unlock while programming.

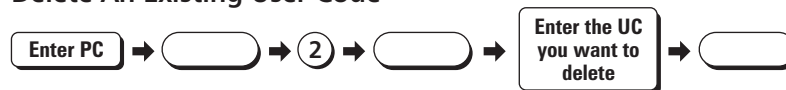
Add New User Code



Remark :

Up to 6 sets of User Code can be saved. User Code should be 4-10 digits in length.

Delete An Existing User Code



Delete All User Code At once



Remark : Auto-locking and Keypad locking function will be invalid when User Codes are deleted. The lock can only be operated by key during the time.

Change Programming Code



Toggle Autolock On/Off



Remark : The preset delay-time is 30 seconds, you can change the time by following instruction.
Repeat the steps to cancel the Auto-locking function.

Programming Code (PC)
USER Code (UC)

Set Autolock Time Delay



Remark : 10-99 seconds delay-time available.

Toggle Mute On/Off



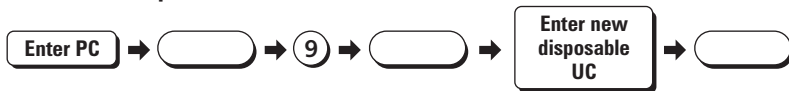
Remark : Repeat same steps to turn beeper On/Off.
LED illumination is still functioning when it's in mute.
But there will be no any warning alarm.

Enable/Disable All User Code



Remark : Auto-locking and Keypad locking function will be invalid when User Codes are disabled. The lock can only be operated by key during the time.
Repeat the steps to enable the User Codes again.

Create a disposable User Code



Remark : Disposable code will be no longer valid once being used.

Restore all preset lock settings

Press **R**

Remark : Press "R" button for over 5 seconds, the programming will complete after you hear 3 long beeps.
After restore, you need to run the door handing identifying process before other function setting.

■ Simple Troubleshooting

Situation 1

After the installation of the lockset and batteries, the door cannot be locked and three short beeps are emitted when you press the Programming button.

Causes : The door-handing indentifying process is not yet complete.

Solutions : Please execute the door-handing indentifying process as soon as the installation of the lockset is completed.

Situation 2

After the installation of the lockset and batteries, no responses when you press any button (no sounds are emitted, and the back light does not work).

Causes : It could be a problem caused by the batteries or the improper connection of the cable.

Solutions : Check to see if the battery polarities have been reversed or if the battery is dead. If so, please re-install or change the battery. If not, please check if the cable is appropriately connected.

Situation 3

Fail in the first execution of the door-handing indentifying process (the red light flashes three times, and three short beeps are emitted).

Causes : Wrong door-handing or change of the door-handing in the memory.

Solutions : Press the R button to restore the system to factory default setting and re-execute door-handing indentifying process.

Situation 4

Although succeeded in the first execution of the door-handing indentifying process, the latch does not work.

(Feeling that the motor runs powerlessly, the latch bolt is stuck, and the turn-piece inside cannot be rotated.)

Causes : Low battery.

Solutions : Please replace with new batteries.

Situation 5

The functioning has been normal, but suddenly, the latch bolt locks up, and the turn piece inside cannot be rotated, not even with the key.

Causes : The detection of latch bolt position is abnormal.

Solutions : Please take out one battery first, then press any button on the front panel for electric discharge, and put the battery back next. The latch bolt will automatically re-detect its position subsequently.

Attentions : When the latch gets stuck frequently, please check if the opening of the strike aims at the central position of the latch bolt, if the latch bolt can stretch out freely, or if the hinges are deformed or tilted.

Situation 6

The door can be locked normally, but three short beeps are heard and the door would not unlock when the user code is entered and the programming button is pressed.

Causes : The functioning of the micro-switch is abnormal.

Solutions : Please unlock the door with the keys first and then contact the distributor for inspection and maintenance.

Situation 7

While the door is closed, you hear the latch bolt coming out when you press the programming button to lock the door; however, three short beeps are emitted.

Conversely, while the door is open, no beeps are emitted when locking the latch bolt.

Causes : (1)The depth of the latch bolt hole is insufficient.

(2)The latch bolt is not aimed at the opening of the strike.

Solutions : (1)Please dig the latch bolt hole for the strike deeper (min. depth of 2.5 cm).

(2)Please adjust the strike to the appropriate position.