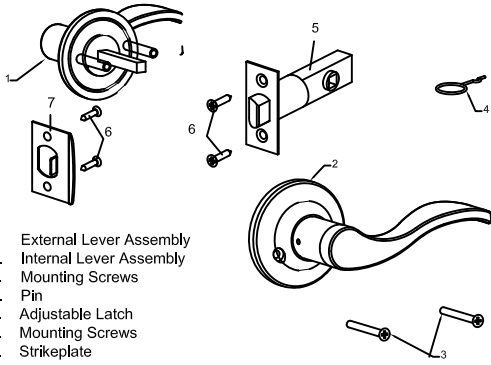


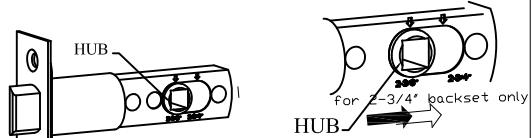


# PASSAGE LEVER INSTALLATION INSTRUCTIONS



ALWAYS WEAR PROTECTIVE EYEWEAR.

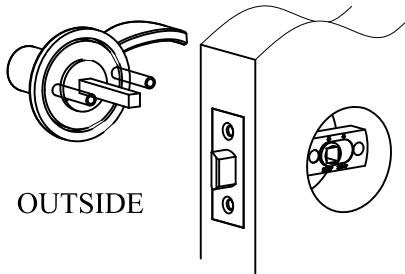
1. Latch is Preset to a 2-3/8" backset. Only if you need a 2-3/4" backset, Adjust the latch bolt to the correct backset by pulling the hub to the marking 2-3/4.



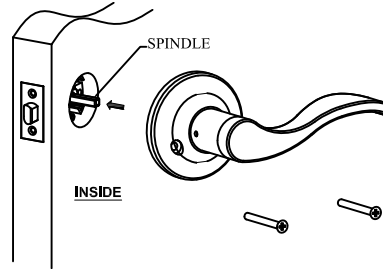
2. Insert the latch bolt into the bottom bore ensuring the curved side of the bolt is facing the door jamb and strikeplate. Install the latch with the mounting screws.



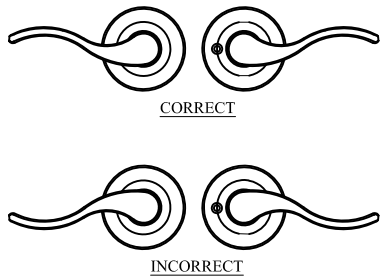
3. From the outside of the door insert spindle portion of the external lever assembly through the square latch hole of the HUB and the screw posts through the latch screw holes.



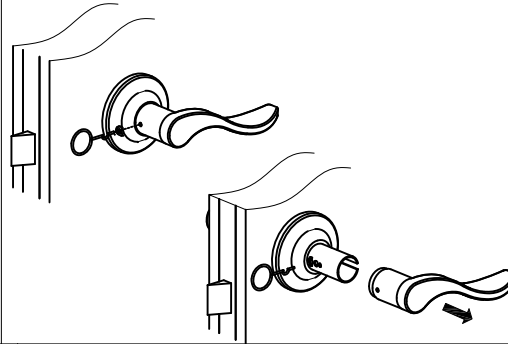
4. From the inside of the door slide internal lever assembly onto the spindle. Align the screw holes and secure the internal lever assembly to the door using the 2 mounting screws. CAUTION: DO NOT OVER TIGHTEN THE MOUNTING SCREWS.



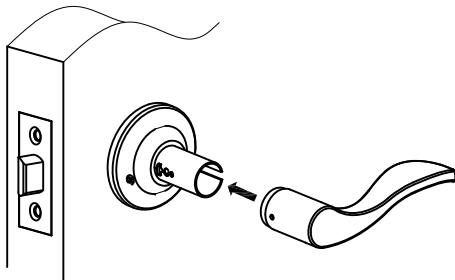
5. Check to ensure the levers are oriented properly. If they are not continue to the next step on how to reverse the lever's orientation.



6. Press the pin into the hole on the lever assembly to release the lever and pull the lever off. Following the same procedure remove the lever from the other side of the door.



7. Switch the levers and slide on the lever assembly. Firmly press the onto the lever assembly until the lever "clicks" in place.



8. Secure the latch strike in place using (2) combo screws.

