



Rockwell Contemporary Offset Square Door Pull handles

Rockwell Contemporary Offset Door Pull handles are constructed of Stainless Steel 300 series with a 1" Square Diameter.

The Rockwell Contemporary Offset Door Pull Handles include through bolts for installation on either Tempered Glass Doors or up to 2-1/2" thick wood, fiberglass or aluminum doors.

Specifications

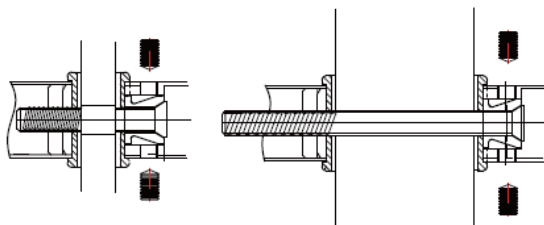
- Material: Stainless Steel #300 series
- Diameter: 1" Square
- Projection: 3"
- Clearance: 2"
- Offset: 3-1/2"
- Total Length: 49"
- Glass Fabrication: 2 x 1/2" diameter holes 48" CTC

- Finishes: Brushed Stainless Steel
- Matt Black

Fasteners included:

Screw Length	Door Thickness
2"	1/4" - 3/4"
3"	3/4" - 1-3/4"
4"	1-3/4" - 2-1/2"

PART NUMBER	Mounting CTC	FINISH
CSOP48BS	48"	BRUSHED STAINLESS STEEL
CSOP48BL	48"	MATT BLACK



Glass Door Mount

Wood or Metal Door Mount

