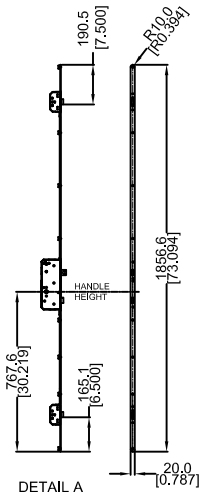


THIS PRINT IS THE EXCLUSIVE PROPERTY OF IMPERIAL. IT CONTAINS PROPRIETARY DATA AND INFORMATION DEVELOPED AT IMPERIAL'S EXPENSE AND IS FURNISHED UPON THE EXPRESS CONDITION ACKNOWLEDGED BY THE RECIPIENT THAT THE CONTENTS SHALL NOT BE DISCLOSED, COPIED, DUPLICATED, SEMINATED, OR USED EXCEPT FOR THE PURPOSES ESTABLISHED BY WRITTEN CONTRACT OR OTHERWISE AUTHORIZED BY IMPERIAL IN WRITING.

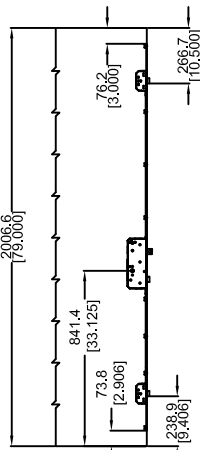
DO NOT SCALE DRAWING

REV	DESCRIPTIONS	REV BY	DATE
A	INITIAL ISSUE	O XIE	04/20/15

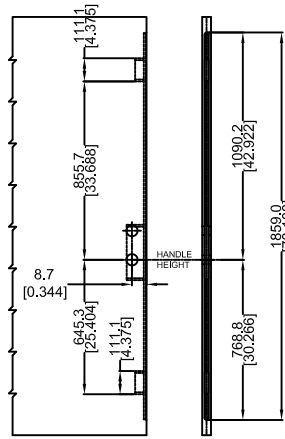
# 70108768 TRIPLE LATCH FOR 6'8" PANEL HEIGHT FOR 2-3/4" BACKSET APPLICATIONS 1 3/4" THICK DOOR



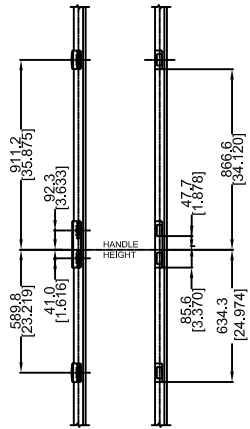
DETAIL A  
6-8 TRIPLE LATCH  
MULTIPOINT LOCK



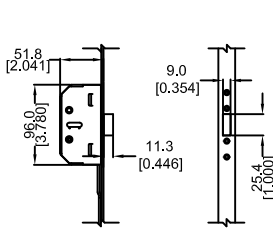
DETAIL B  
6-8 LOCK  
SIMULATION



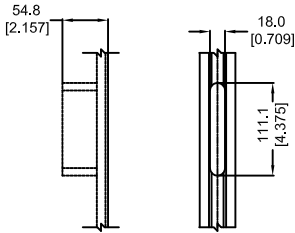
DETAIL C  
6-8 LOCK DOOR  
PANEL PREP



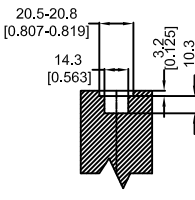
DETAIL D  
6-8 LOCK  
STRIKE PREP



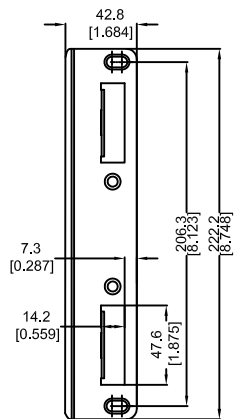
DETAIL E  
LATCH CASE DETAIL



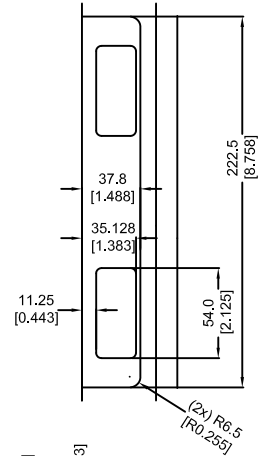
DETAIL F  
LATCH MORTISE DETAIL



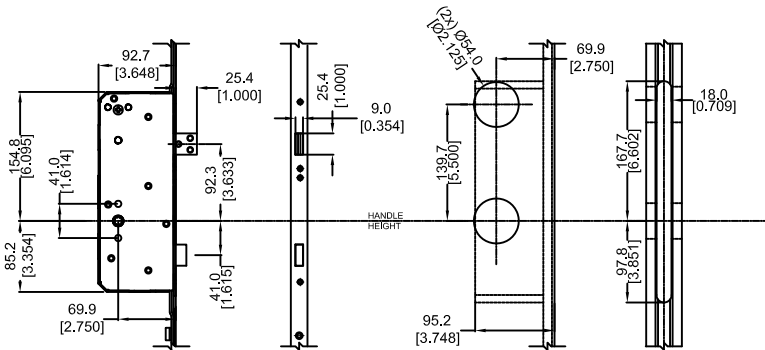
DETAIL G  
EUROGROOVE DETAIL



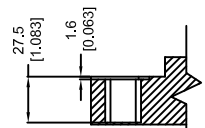
DETAIL H  
CENTER CASING DETAIL



DETAIL I  
CENTER CASING MORTISE DETAIL



DETAIL J  
ADJUSTABLE  
STRIKE DETAIL



DETAIL K  
ADJUSTABLE  
STRIKE ROUTE

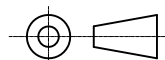
DRAWING No. -  
**MPL-68-2P750**

REV. SHEET  
**A 1/1**

DESCRIPTION -  
**6' 8" TRIPLE LATCH MULTIPOINT LOCK  
DOUBLE STRIKE DETAL (2-3/4" BACKSET)**

CAD INFO -  
**PROJECTS/MP/TRIPLE LATCH**

DRAWN - O XIE  
DATE - 04/20/15



SCALE -

**Rockwell Security Inc.**