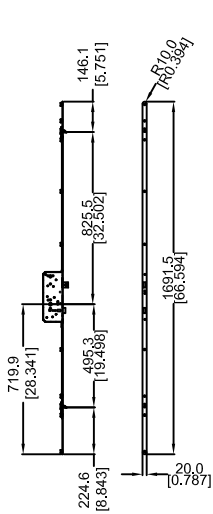


THIS PRINT IS THE EXCLUSIVE PROPERTY OF IMPERIAL. IT CONTAINS PROPRIETARY DATA AND INFORMATION DEVELOPED AT IMPERIAL'S EXPENSE AND IS FURNISHED UPON THE EXPRESS CONDITION ACKNOWLEDGED BY THE RECIPIENT THAT THE CONTENTS SHALL NOT BE DISCLOSED, COPIED, DUPLICATED, OR USED EXCEPT FOR THE PURPOSES ESTABLISHED BY WRITTEN CONTRACT OR OTHERWISE AUTHORIZED BY IMPERIAL IN WRITING.

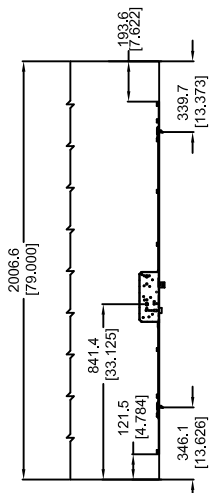
DO NOT SCALE DRAWING

REV	DESCRIPTIONS	REV BY	DATE
A	INITIAL ISSUE	O XIE	04/20/15

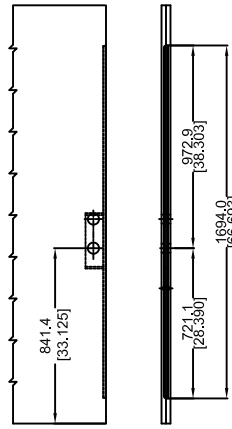
73228768 TONGUE STEEL FOR 6'8" PANEL HEIGHT FOR 2-3/8" BACKSET APPLICATIONS 1 3/4 THICK DOOR



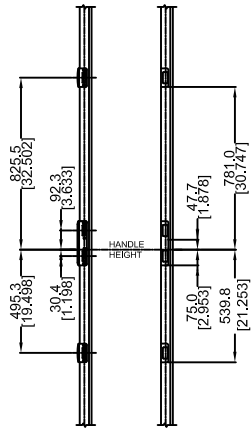
DETAIL A
6-8 TONGUE
MULTIPOINT LOCK



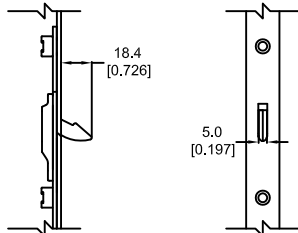
DETAIL B
6-8 LOCK
SIMULATION



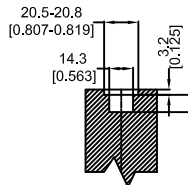
DETAIL C
6-8 LOCK DOOR
PANEL PREP



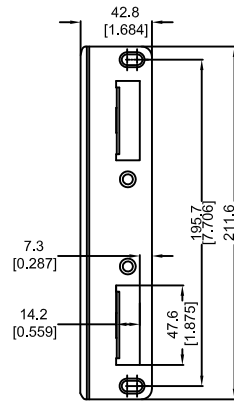
DETAIL D
ADJUSTABLE STRIKE DETAIL



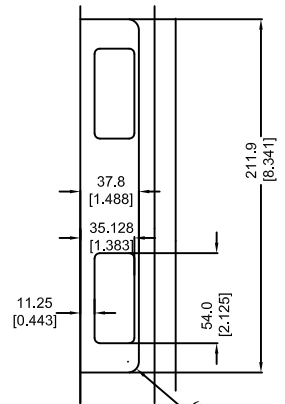
DETAIL E
TONGUE DETAIL



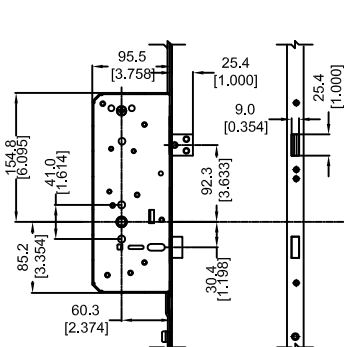
DETAIL F
EUROGROOVE DETAIL



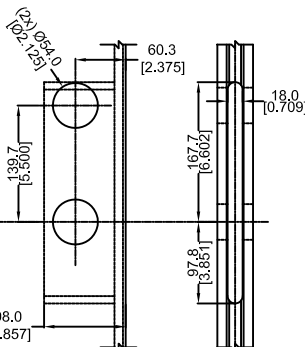
DETAIL J
ADJUSTABLE
STRIKE DETAIL



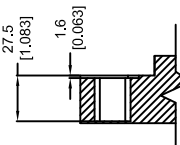
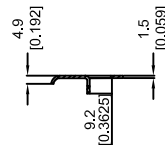
DETAIL K
ADJUSTABLE
STRIKE ROUTE



DETAIL G
CENTER CASING DETAIL



DETAIL H
CENTER CASING MORTISE DETAIL



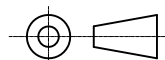
DRAWING No. -
MPT-68-2P375

REV. SHEET
A 1/1

DESCRIPTION -
**6' 8" TONGUE MULTIPOINT LOCK DETAIL
DOUBLE STRIKE (2-3/8" BACKSET)**

CAD INFO -
PROJECTS/MP/TONGUE

DRAWN - O XIE
DATE - 04/20/15



SCALE -

Rockwell Security Inc.