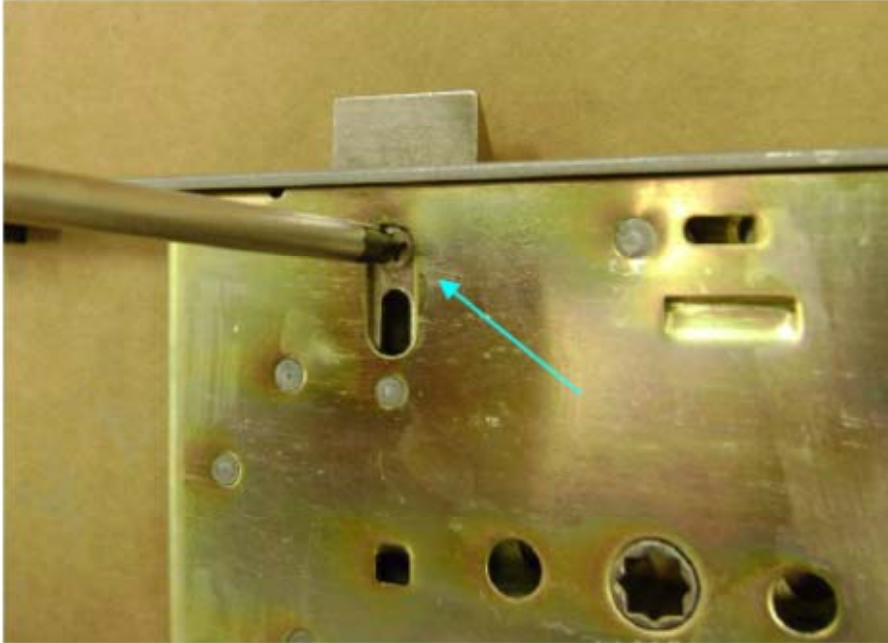
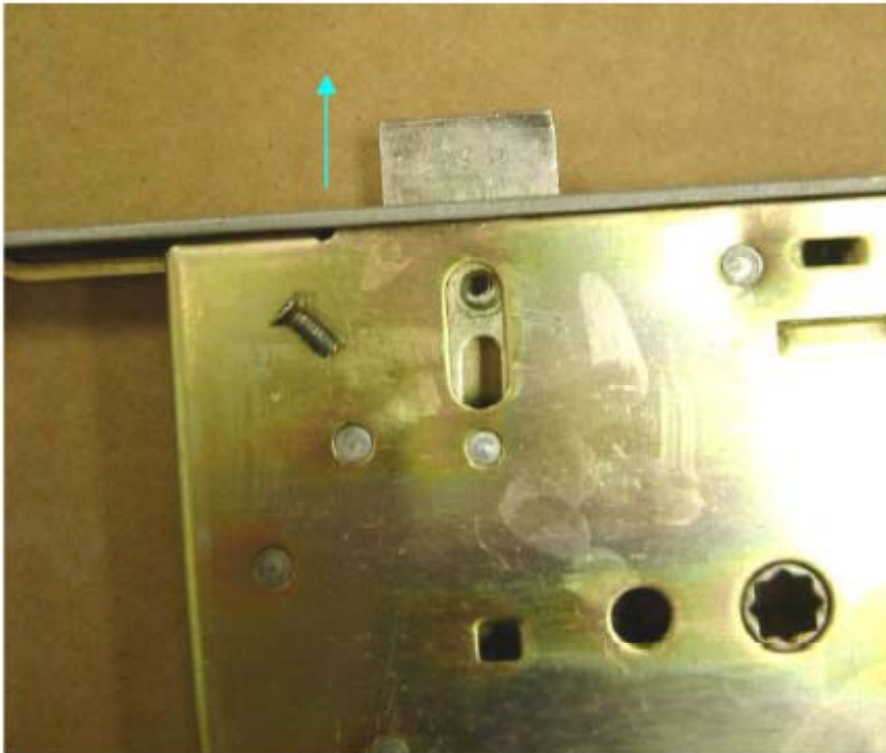


To Reverse Multipoint Lock Handing.

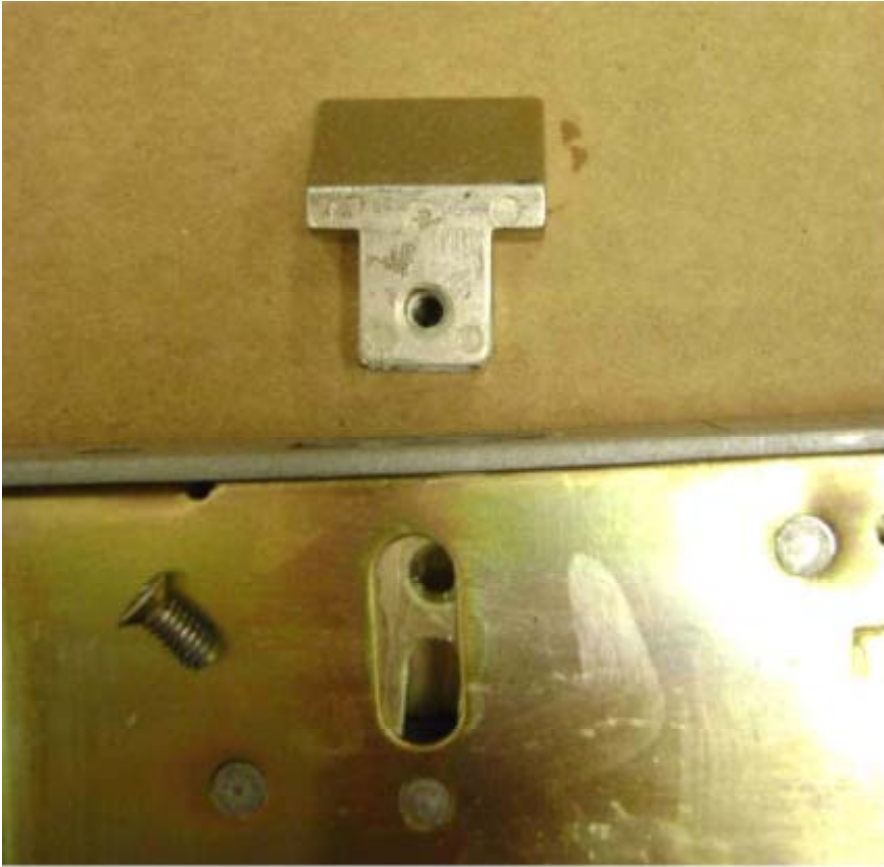
1. On the Center Casing – remove the latch screw located behind the latch on the lock body.
2. Use Philips Screw driver to remove the latch screw.



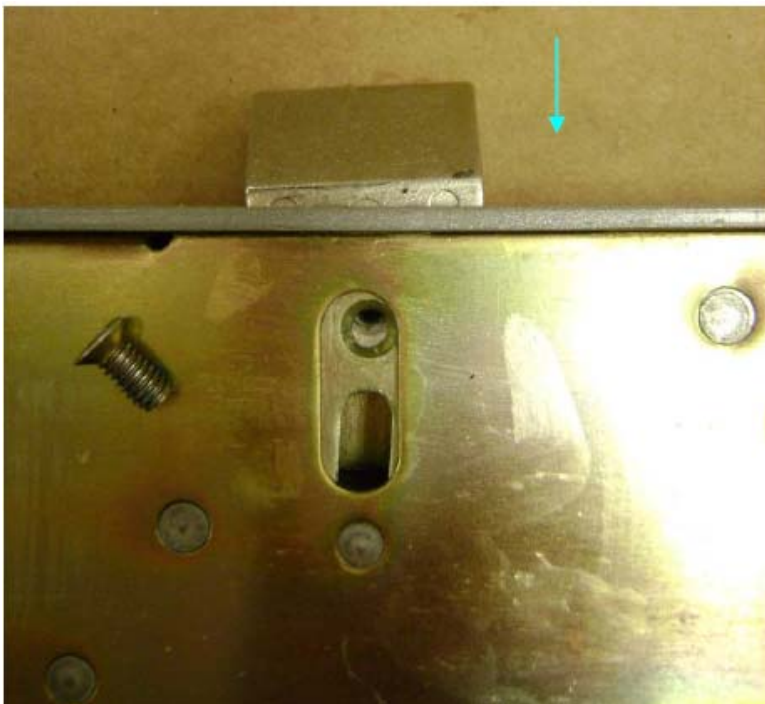
3. Remove the Latch Handing Screw from the lock body.



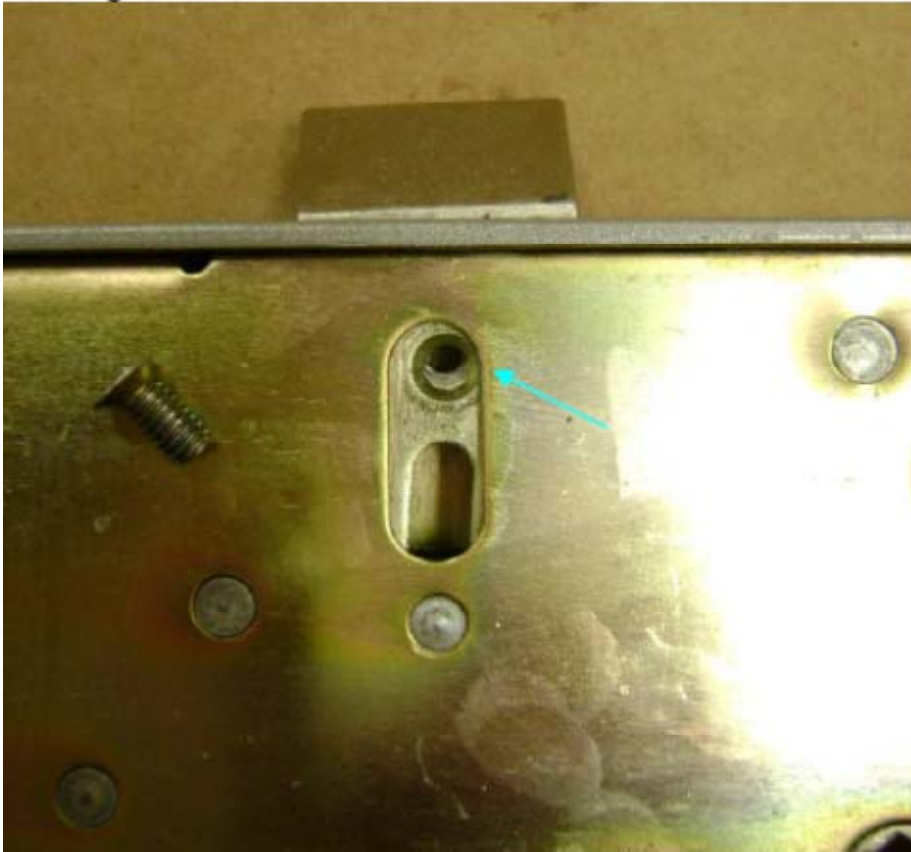
4. Pull the Latch out of the lock body and flip the latch over to change handing



5. Reinsert Latch bolt back into the lock body



6. Align Latch Screw hole with the slot in the lock body.



7. Reinsert Latch screw and tighten latch.

