



Rockwell Contemporary Offset Square Door Pull handles

Rockwell Contemporary Offset Door Pull handles are constructed of Stainless Steel 300 series with a 1" Square Diameter.

The Rockwell Contemporary Offset Door Pull Handles include through bolts for installation on either Tempered Glass Doors or up to 2-1/2" thick wood, fiberglass or aluminum doors.

Specifications

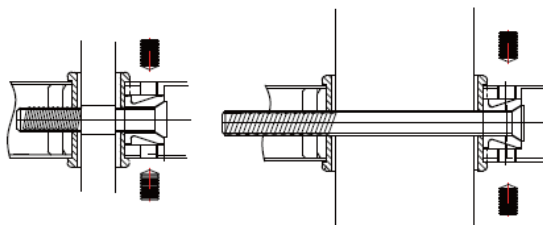
Material: Stainless Steel #300 series
 Diameter: 1" Square
 Projection: 3"
 Clearance: 2"
 Offset: 3-1/2"
 Total Length: 49"
 Glass Fabrication: 2 x 1/2" diameter holes 48" CTC

Finishes: Brushed Stainless Steel
 Matt Black

Fasteners included:

Screw Length	Door Thickness
2"	1/4" - 3/4"
3"	3/4" - 1-3/4"
4"	1-3/4" - 2-1/2"

PART NUMBER	Mounting CTC	FINISH
CSOP48BS	48"	BRUSHED STAINLESS STEEL
CSOP48BL	48"	MATT BLACK



Glass Door Mount

Wood or Metal Door Mount

