



Rockwell Security Inc.



COMMERCIAL DOOR HARDWARE



ROCKWELL CONTINUOUS HINGES

Aluminum Geared Continuous Hinges

SPECIFICATIONS

Available in Full Mortise and Surface Mount

Material: 6063 T6 Aluminum Alloy with Interlocking Extrusions

Non-Handed Design

Standard duty with 16 Thrust type Self Lubricating Concealed bearings

Heavy Duty with 32 Thrust type Self-Lubricating concealed bearings per hinge

High degree of security

Anodized aluminum after machining

Through bolt and machine screws fixing

Template Hole Pattern

10 year Warranty

10 Series

Full Mortise Type

Flush Mount

Each hinge has an alignment stop

1/4" clearance between door and frame

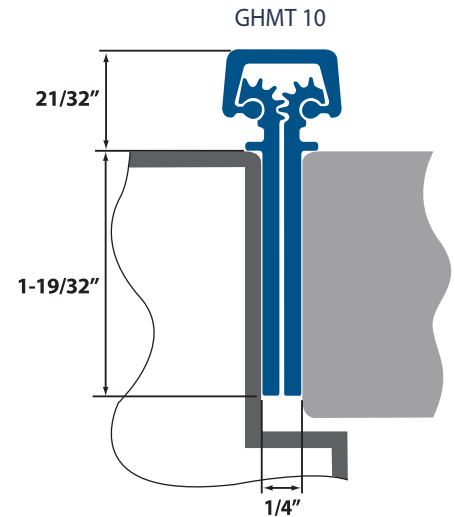
24 Series

Full Mortise Type

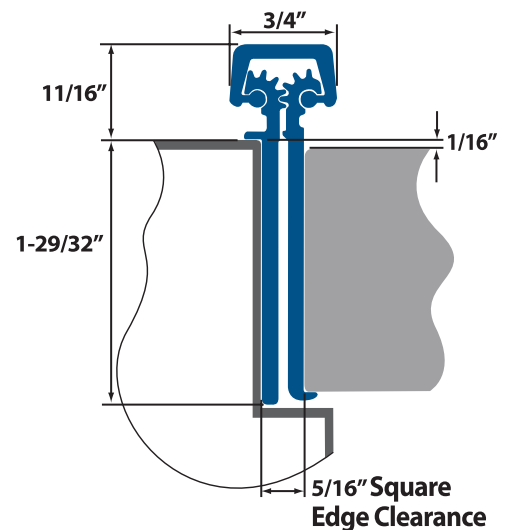
1/16" Door Offset

Door Edge Guard

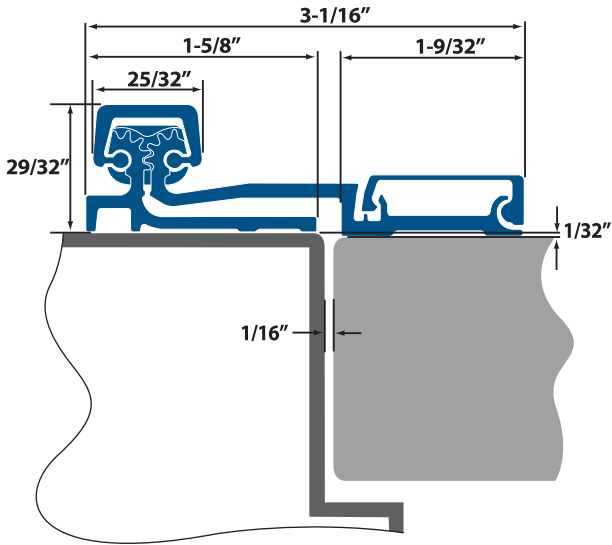
5/16" clearance between door and frame



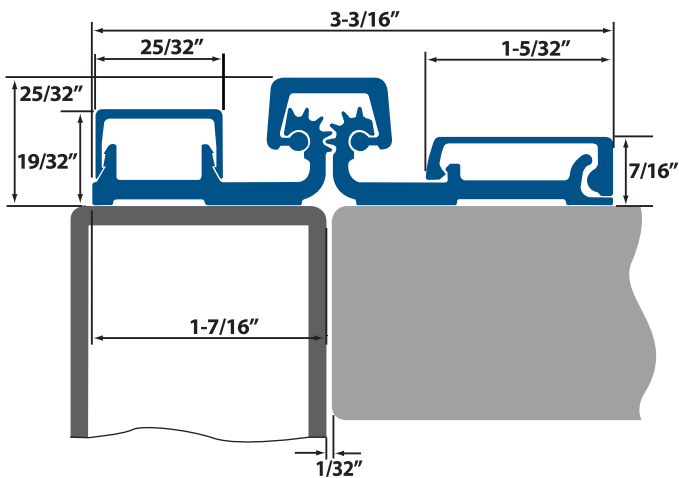
GHMT 24



GHFS 21



GHFS 30



ROCKWELL CONTINUOUS HINGES

SPECIFICATIONS

21 Series

Full Surface Type

1/32" Door Offset

Tamper Resistant Removable door leaf cover

1/16" clearance between door and frame

30 Series

Full Surface Type

For Narrow Limited Frames

Tamper Resistant Removable door leaf cover

1/16" clearance between door and frame

| Part No. | Roton | Select | Pemko |
|---------------|---------|--------|-------|
| SFGHMT10-83SD | 780-112 | SL11 | FMSLF |
| SFGHFS2183SD | 780-210 | SL21 | FS |
| SFGHMT2483SD | 780-224 | SL24 | FM |
| SFGHFS3083SD | 780-157 | SL57 | FSCP |



SPECIFICATIONS

Slimline fits 2" narrow aluminum door stiles
 Door thickness: 1-3/4"
 Cylinder: SC1 Keyway
 Underwriters' Laboratories Inc. UL Listed - 3 hour Fire Rating
 Handing: Non-handed and reversible
 Latch bolt : 5/8" Throw
 Dogging: Hex Key dogging
 Door width: 36" Standard
 Finishes: Aluminum and Duronodic

SPECIFICATIONS

Door thickness: 1-3/4"
 Cylinder: SC1 Keyway
 Concealed Vertical Rod Standard for 7'0" door height
 Handing: Non-handed, Field reversible
 Latch bolt: 5/8" Throw
 Dogging: Hex Key dogging
 Door width: 36" Standard
 Finishes: Aluminum and Duronodic

ROCKWELL SLIMLINE PANIC EXIT DEVICES

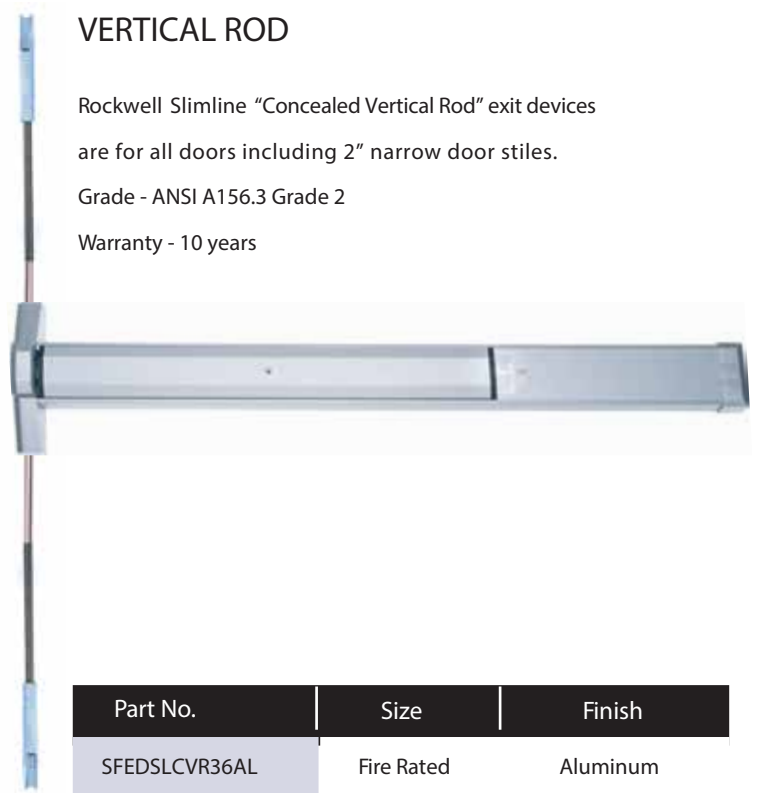


Rockwell Slimline exit devices are suitable for all doors including narrow stile doors with a minimum 2" mounting surface. Rim Cylinder included for keyed entry.
 Grade - ANSI A156.3 Grade 2
 Warranty - 10 years

| Part No. | Size | Finish |
|------------|------------|----------|
| SFEDSL36AL | Fire Rated | Aluminum |
| SFEDSL36DU | Fire Rated | Bronze |

ROCKWELL SLIMLINE CONCEALED VERTICAL ROD

Rockwell Slimline "Concealed Vertical Rod" exit devices are for all doors including 2" narrow door stiles.
 Grade - ANSI A156.3 Grade 2
 Warranty - 10 years



| Part No. | Size | Finish |
|---------------|------------|----------|
| SFEDSLCVR36AL | Fire Rated | Aluminum |
| SFEDSLCVR36DU | Fire Rated | Bronze |

ROCKWELL EXIT DEVICE

SFEDT Series

Rockwell exit devices are suitable for medium and wide stile doors (aluminum, hollow metal, or wood) where there is no projection on the face. Available in Stainless Steel or extruded anodized aluminum.

Grade - ANSI A156.3 Grade 2

Warranty - 10 years



SPECIFICATIONS

Material: Anodized aluminum push bar, or stainless steel

Latch: Stainless Steel, 3/4" throw - 5/8" deadlatch

Backset: 2-3/4" Covers 161 prep, includes latch & strike filler plates

Strike: Surface mounted for 5/8" stop with shim

Projection: 2-1/2" - 1-7/8" dogged

Door Stile: 4-1/4" minimum

Handing: Reversible, non-handed

Door Thickness: 1-3/4" standard

Door Width: 36"

| Part No. | Size | Finish |
|-------------|------------|-----------------|
| SFEDTBARAL | Fire Rated | Aluminum |
| SFEDTBARDU | | Bronze |
| SFEDTBARFAL | | Aluminum |
| SFEDTBARSS | | Stainless Steel |



ROCKWELL TRIM OPTIONS



Handle set Trim

| Part No. | | Finish |
|--------------|-------|----------|
| TH1100-DUMED | Dummy | Aluminum |
| TH1100-TPED | Entry | Aluminum |



Exit device Trim

| Part No. | | Finish |
|--------------|-----------|----------|
| TH1100-PLDUM | Dummy | Aluminum |
| TH1100-PLED | Pull Trim | Aluminum |



Lever Trim

| Part No. | | Finish |
|-------------|---------|----------|
| TH1100-LHED | Entry | Aluminum |
| TH1100-LHPS | Passage | Aluminum |
| TH1100-LHST | Dummy | Aluminum |



SPECIFICATIONS

Offset Back to Back Tempered Glass Mount Commercial

Pull Sizes: 10" or 12"

Material Specifications: Stainless Steel

Glass Thickness: 3/8" to 3/4"

Construction: 1" (25mm) Diameter

Offset: 3"

Glass Fabrication:

2 X 5/8" diameter holes— 10" CTC or 12" CTC

INCLUDES

2 Through bolts for Glass mounting

4 Metal Washers— 1-1/4" diameter with rubber gaskets.

| Part No. | Size | Finish |
|--------------|------|--------------------|
| SDDPW1-10BS | 10" | Brushed Stainless |
| SDDPW1-10PS | 10" | Polished Stainless |
| SDDPW1-12-BS | 12" | Brushed Stainless |
| SDDPW1-12-PS | 12" | Polished Stainless |

ROCKWELL COMMERCIAL PULLS



SPECIFICATIONS

Inline Back to Back Tempered Glass Mount Commercial

Pull Sizes: 10" or 12"

Material Specifications: Stainless Steel

Application: Heavy Glass Doors

Glass Thickness: 3/8" to 3/4"

Construction: 1" (25mm) Diameter

Glass Fabrication:

2 X 5/8" diameter holes— 10" CTC or 12" CTC

INCLUDES

2 Through bolts for Glass mounting

4 Metal Washers— 1-1/4" diameter with rubber gaskets.

| Part No. | Size | Finish |
|------------|------|--------------------|
| SDHW1-10BS | 10" | Brushed Stainless |
| SDHW1-10PS | 10" | Polished Stainless |
| SDHW1-12BS | 12" | Brushed Stainless |
| SDHW1-12PS | 12" | Polished Stainless |

ROCKWELL GLASS MOUNTED STRAIGHT COMBINATION PUSH AND PULL HANDLES

Rockwell Glass Mount Straight Combination Pulls are for
Use with 3/8" to 3/4" (10 - 19 mm) Glass thickness



SPECIFICATIONS

- Fits 3/8" - 3/4" (10 - 19 mm) Glass
- Diameter: 1" (25mm)
- Material: Stainless Steel or Brass Tubing
- Glass Fabrication: 3-5/8" (16 mm)
- Diameter Holes: 28" (711 mm CTC)



** TEMPERED GLASS Use Only

INCLUDES

- 2 Through bolts for Glass mounting
- 4 Metal Washers— 1-1/4" diameter with rubber gaskets.

| Part No. | Size | Finish |
|-------------|----------|--------------------|
| CPPW10X28BS | 10"x 28" | Brushed Stainless |
| CPPW10X28PS | 10"x 28" | Polished Stainless |
| CPPW12X28BS | 12"x 28" | Brushed Stainless |
| CPPW12X28PS | 12"x 28" | Polished Stainless |

ROCKWELL DUSTPROOF KEEPER WITH MOUNTING PLATE

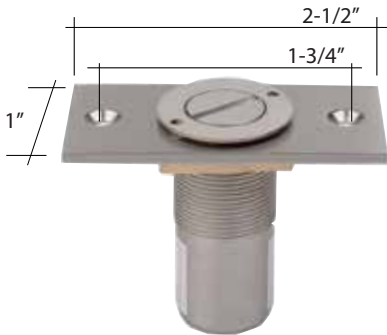
Rockwell Dustproof Keeper with Mounting Plate available in four finishes in Locking models. Accepts 5/8" (16 mm) Diameter Plunger Bolt

SPECIFICATIONS

- Fits 5/8" (16 mm) Plunger from these or similar devices
- Function: Locking
- Material: Stainless Steel

INCLUDES

- 2 Flat Head Screws
- (Requires a 1" diameter hole drilled 2" into floor for installation)



| Part No. | Finish |
|---------------|--------------------|
| DA-DPS02-AL | Aluminum |
| DA-DPS02-BL | Black |
| DA-DPS02-CP | Polished Stainless |
| DA-DPS02-US15 | Brushed Stainless |



ROCKWELL DEADBOLT MORTISE LOCKSET

SPECIFICATIONS

Material Specifications: Steel in zinc dichromate finish.

Backset: 31/32", 1-1/8"

Cylinder: Lock Accepts Standard 1-5/32" mortise cylinders

Faceplate: 1" W x 6-7/8" L



| Part No. | Material | Backset |
|------------|----------|---------|
| SFDB01118 | Steel | 1-1/8 |
| SFDB013132 | Steel | 31/32 |

ROCKWELL DEADLATCH MORTISE LOCKSET

SPECIFICATIONS

Material Specifications: Steel in zinc dichromate finish.

Backset: 31/32", 1-1/8"

Non-handed—field reversible

Cylinder: Lock Accepts Standard 1-5/32" mortise cylinders

Faceplate: 1" W x 6-7/8" L



| Part No. | Material | Backset |
|------------|----------|---------|
| SFDL01118 | Steel | 1-1/8 |
| SFDL013132 | Steel | 31/32 |

SPECIFICATIONS

Material Specifications: All Stainless Steel, Steel with Stainless Steel Hook (Steel in zinc dichromate finish)

Backset: 31/32", 1-1/8"

Cylinder: Lock Accepts Standard 1-5/32" mortise cylinders

Faceplate: 1" W x 6-7/8" L

Lock Bolt: 5/8" x 1-3/8" with 13/16" throw

5 Ply laminated stainless steel or steel with anti-saw core

Lock Accepts 1-5/32"

Mortise cylinder (sold separately) from both sides. MS Cam

Faceplates sold separately in Duronodic or Aluminum finishes and are available in radius, flat, bevel, and with weather strip.

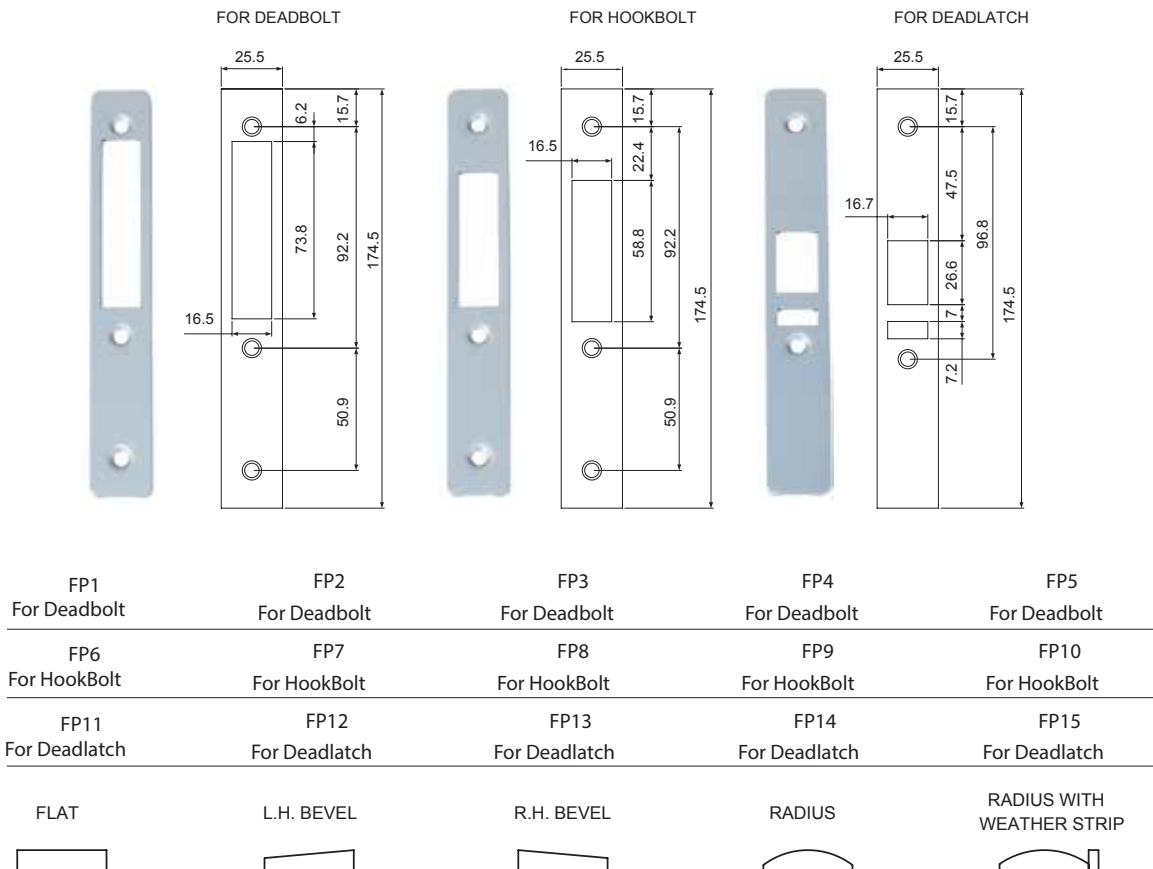
| Part No. | Casing | Hook | Backset |
|------------|-----------------|-----------|---------|
| SFHBSS118 | Stainless Steel | Stainless | 1-1/8 |
| SFHBSS3132 | | Steel | 31/32 |
| SFHB00118 | Steel | Stainless | 1-1/8 |
| SFHBST3132 | | Steel | 31/32 |



ROCKWELL STAINLESS STEEL DEADLOCKING HOOK BOLT



FACEPLATE INFORMATION





ROCKWELL MORTISE CYLINDERS

SPECIFICATIONS

Diameter: 1-5/32"

5 PIN mortise keyed cylinder SC1 Keyway

Cam: MS-type cam

Finishes: Aluminum and Bronze

Functions: Keyed, Privacy thumbturn or dummy

Available in singles or pairs keyed differently or keyed alike

Supplied with trim ring 1/4" thick



| Part No. | Function | Finish |
|----------|----------|----------|
| SFDUMAL | Dummy | Aluminum |
| SFDUMDU | Dummy | Bronze |



| Part No. | Function | Finish |
|----------|-----------------|----------|
| SFRCAL | Keyed Different | Aluminum |
| SFRCDU | | Bronze |



| Part No. | Function | Finish | Quantity |
|------------|-----------------|----------|----------|
| SFZCX1AL | Keyed Different | Aluminum | Single |
| SFZCX1DU | | Bronze | |
| SFZCX2AL | Keyed Different | Aluminum | Pair |
| SFZCX2DU | | Bronze | |
| SFZCX1ALKA | Keyed Alike | Aluminum | Single |
| SFZCX1DUKA | | Bronze | |
| SFZCX2ALKA | Keyed Alike | Aluminum | Pair |
| SFZCX2DUKA | | Bronze | |



| Part No. | Material | Finish |
|----------|----------|----------|
| SFZTAL | Zinc | Aluminum |
| SFZTDU | | Bronze |
| SFBTAL | Brass | Aluminum |
| SFBTDU | | Bronze |

ROCKWELL PUSH-PULL PADDLE

SPECIFICATIONS

Works with Standard Deadlatches.

Field Reversible with Cam Plug included.



| Part No. | Handing | Finish |
|------------|---------|----------|
| SFPUSHALLH | LH | Aluminum |
| SFPUSHALRH | RH | Aluminum |
| SFPUSHDULH | LH | Bronze |
| SFPUSHDURH | RH | Bronze |

ROCKWELL LEVER HANDLE

Non-handed and reversible handle. For use with Rockwell Deadlatch or narrow stile mortise deadlatches.

SPECIFICATIONS

Material: Aluminum Alloy

Escutcheon: 1-3/8" x 4"

Spindle: 1/4" square



| Part No. | Description |
|----------|-------------|
| SFLH-AL | Aluminum |
| SFLH-DU | Bronze |



ROCKWELL ACCESSORIES

CYLINDER GUARD



TR1
Extruded
Trim Ring



TR2
Stamped
Trim Ring



CG1
Anti-Wrench
Collar

| Part No. | Finish |
|----------|----------|
| SFTR1AL | Aluminum |
| SFTR1DU | Bronze |
| SFTR2AL | Aluminum |
| SFTR2DU | Bronze |
| SFCG1AL | Aluminum |
| SFCG1DU | Bronze |

STRIKES



ST2
Single Strike



ST1
Double Strike

| Part No. | Finish |
|----------|----------|
| SFST2 | Aluminum |
| SFST1 | Aluminum |



ROCKWELL OFFSET PIVOTS

SFOP09

Diecast Aluminum Construction

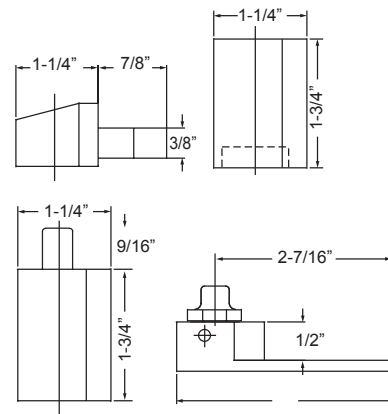
1/8" Vertical Adjustment

Tamper Proof with full race bearings

Non-Handed, Reversible

1/8" Recessed

| Part No. | Finish |
|----------|----------|
| SFOP09AL | Aluminum |
| SFOP09DU | Bronze |



SFOP09



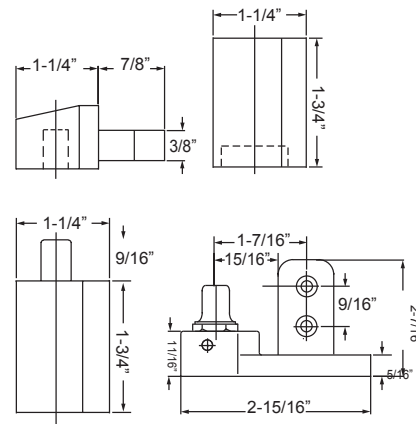
SFOP10

Suitable for Arch, Vistawall

Handed — Not Reversible

1/8" Recessed

| Part No. | Handing | Finish |
|-------------|------------|----------|
| SFOP10LHAL | Left Hand | Aluminum |
| SFOP10RHAL | Right Hand | Aluminum |
| SFOP10LH DU | Left Hand | Bronze |
| SFOP10RH DU | Right Hand | Bronze |



SFOP10



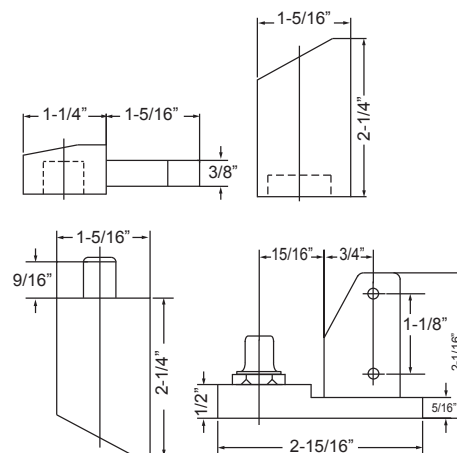
SFOP12

Suitable for Amarlite

Handed — Not Reversible

1/8" Recessed

| Part No. | Handing | Finish |
|-------------|------------|----------|
| SFOP12LHAL | Left Hand | Aluminum |
| SFOP12RHAL | Right Hand | Aluminum |
| SFOP12LH DU | Left Hand | Bronze |
| SFOP12RH DU | Right Hand | Bronze |



SFOP12





ROCKWELL OFFSET PIVOTS

Diecast Aluminum Construction

1/8" Vertical Adjustment

Tamper Proof with full race bearings

SFOP14

Suitable for US Aluminum

1/8" Recessed

| Part No. | Handing | Finish |
|-------------|------------|----------|
| SFOP14ULHAL | Left Hand | Aluminum |
| SFOP14URHAL | Right Hand | Aluminum |
| SFOP14ULHDU | Left Hand | Bronze |
| SFOP14URHDU | Right Hand | Bronze |

SFOP14KM

Suitable for Pitco

1/8" Recessed

| Part No. | Handing | Finish |
|--------------|------------|----------|
| SFOP14KMLHAL | Left Hand | Aluminum |
| SFOP14KMRHAL | Right Hand | Aluminum |
| SFOP14KMLHDU | Left Hand | Bronze |
| SFOP14KMRHDU | Right Hand | Bronze |

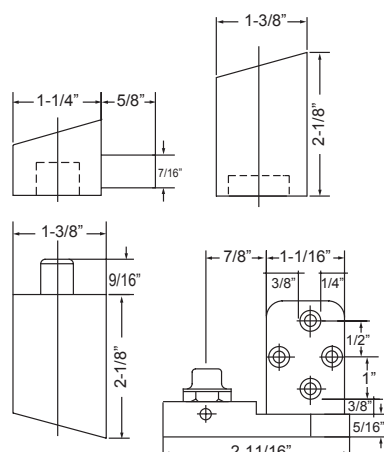
1118

Suitable for Kawneer

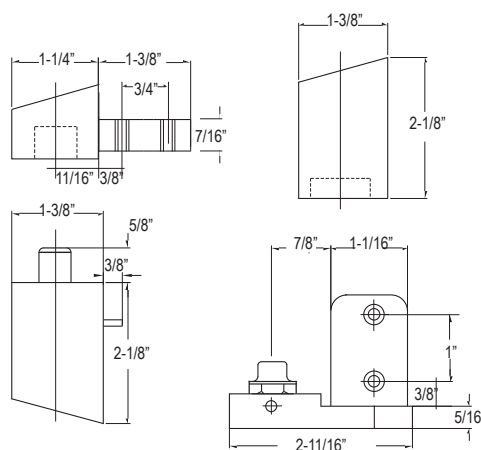
Pivot—top and bottoms sold separately.

| Part No. | Handing | Finish |
|-----------|------------|----------|
| 1118BLHAL | Left Hand | Aluminum |
| 1118BRHAL | Right Hand | Aluminum |
| 1118BLHDU | Left Hand | Bronze |
| 1118BRHDU | Right Hand | Bronze |

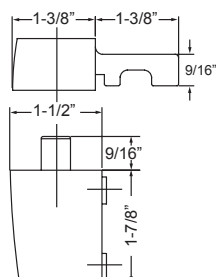
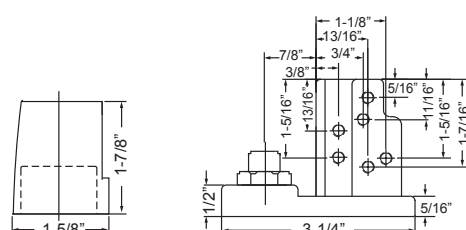
| Part No. | Finish |
|----------|----------|
| 1118TAL | Aluminum |
| 1118TDU | Bronze |



SFOP14



SFOP14KM



1118



ROCKWELL OFFSET PIVOTS

Diecast Aluminum Construction

1/8" Vertical Adjustment

Tamper Proof with full race bearings

SFOP16

Suitable for Aldora

Handed Not Reversible

Recessed

| Part No. | Handing | Finish |
|-------------|------------|----------|
| SFOP16LHAL | Left Hand | Aluminum |
| SFOP16RHAL | Right Hand | Aluminum |
| SFOP16LH DU | Left Hand | Bronze |
| SFOP16RH DU | Right Hand | Bronze |

SFOP13

Suitable for YKK

Handed—Not Reversible

| Part No. | Handing | Finish |
|-------------|------------|----------|
| SFOP13LHAL | Left Hand | Aluminum |
| SFOP13RHAL | Right Hand | Aluminum |
| SFOP13LH DU | Left Hand | Bronze |
| SFOP13RH DU | Right Hand | Bronze |

SFOP11120

Intermediate Pivot

Suitable for Arch / Amarlite

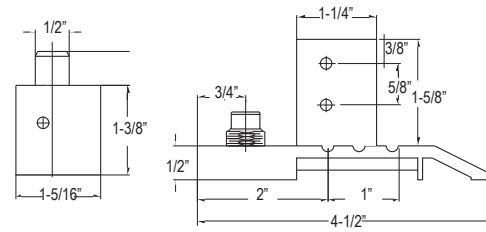
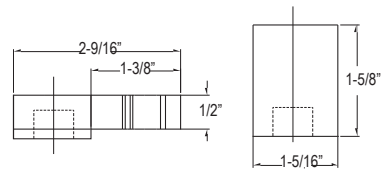
| Part No. | Finish |
|-------------|----------|
| SFOP11120AL | Aluminum |
| SFOP11120DU | Bronze |

SFOP11121

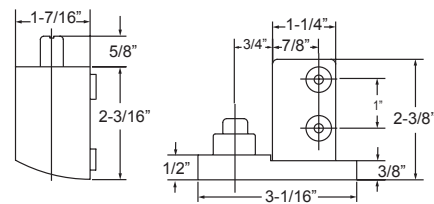
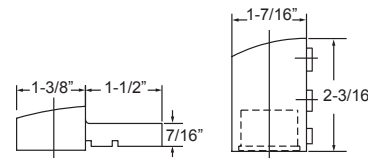
Intermediate Pivot

Suitable for Kawneer

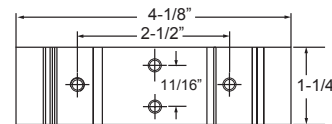
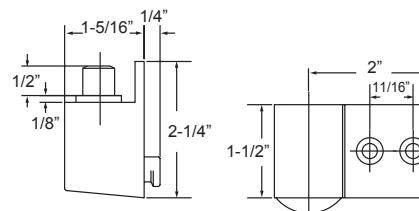
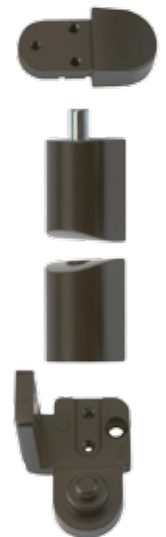
| Part No. | Finish |
|-------------|----------|
| SFOP11121AL | Aluminum |
| SFOP11121DU | Bronze |



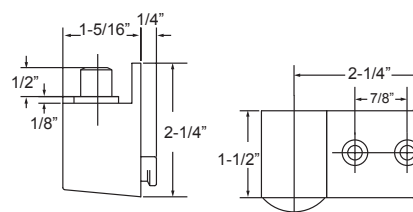
SFOP16



SFOP13



SFOP11120



SFOP11121



ROCKWELL HINGE REPLACEMENT KIT

Fits both Flush and 1/8" Recessed Doors

Adjustable with Ball Bearing and self lubricating Pin

Construction: Aluminum

Finishes: Anodized Aluminum and Anodized Bronze

Each Hinge kit contains 2 Hinges, 2 pcs of 1/8" thick shim Plates, 4 Screw Cover Plates, 12 pcs One Way Mounting Screws, One Hex Wrench and installation instructions.



| Part No. | Finish |
|----------|----------|
| SFHK1AL | Aluminum |
| SFHK1DU | Bronze |

ROCKWELL THRESHOLD TB4016

For Doors with Cylinder height 34-37"



ROCKWELL FLUSH BOLT

SPECIFICATIONS

Throw: 3/4"

Adjustment: 5/8" on Rod Length



| Part No. | Backset | Rod | Finish |
|----------|---------|-----|----------|
| SFFB1AL | 1/8 | 10" | Aluminum |
| SFFB1DU | 1/8 | 10" | Bronze |
| SFFB2AL | 1/8 | 15" | Aluminum |
| SFFB2DU | 1/8 | 15" | Bronze |
| SFFB3AL | 1/4 | 12" | Aluminum |
| SFFB3DU | 1/4 | 12" | Bronze |



ROCKWELL SECURITY

18040032 Series Surface Mounted Overhead Door Stops

18040032 Series Light to Medium Duty
Surface application for single acting doors
available in:

"S" –Stop only with shock absorbing spring and

"H" –Hold only (Special order)

"F" –Friction type (Special order)

Features and Benefits

Stainless steel construction to withstand the
toughest environmental conditions

Non-handed (Reversible)

SPECIFICATIONS

For Doors: 18" - 40" wide x 1-3/8" - 1-3/4" thick

Track: Stainless Steel, 3/4" wide x 5/8" high x 0.059"

Slide: Wear resistant nylon for high loading
and wear applications

Arm: Stainless Steel 0.0134" x 9/16"

Jamb Bracket: Stainless Steel 3/4" x 3"

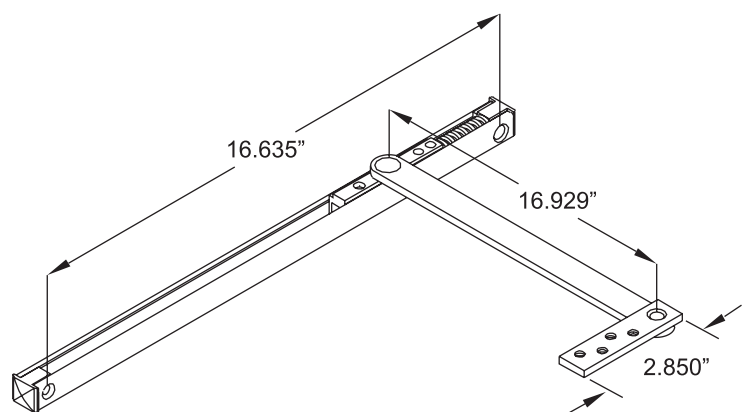
Handing: Reversible/Non-handed

Spring Heavy: Heavy duty shock spring

Finishes: US32 and US32D (Other finishes
maybe available on special order)

Fasteners: Machine screws, through-bolts, wood screws

Fits: 36-1/16" to 42" wide doors, Up to 2-1/2"
thick doors (Other door size options available
by special order)





PRECISION BEARING COMMERCIAL GRADE ADJUSTABLE ROLLER

SPECIFICATIONS

GENERAL DESCRIPTION

Precision Bearing end adjust heavy duty commercial grade tandem rollers for sliding glass doors. Heavy gauge housing and sealed precision bearing wheels for heavy load capacity. Height adjustment mechanism can be operated with a Phillips screwdriver. Mounting tabs and hole location conform to general industry practice.

MATERIAL AND FINISH

Housing: Heavy gauge Stainless steel

Wheel: Stainless steel

Bearing and Race: Sealed Precision Bearing

Load Capacity: Up to 250 lbs.

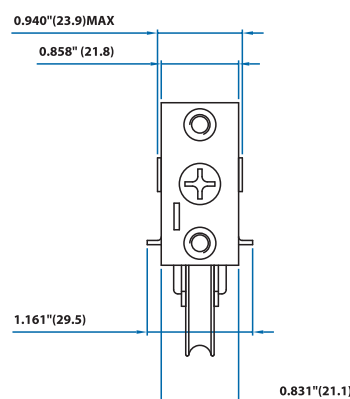
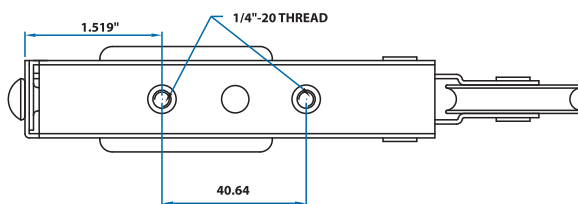
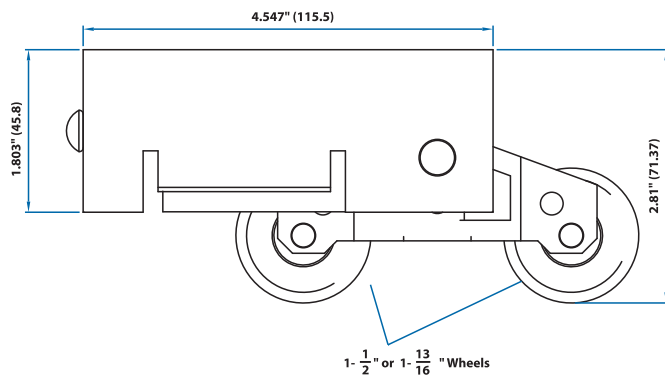
Height Adjustment Range: Up to 0.77"

Adjustment Type: Ramped slot Screw driven

Certification: Exceeds AAMA 906-96 requirements for cycle life and load capacity

Wheel size 1.5" diameter or 1-13/16" diameter

| Part Number | Wheel Size | Wheel \ Case |
|-------------|------------|--------------|
| 5400925 | 1-1/2" | Stainless |
| 5433925 | 1-13/16" | Stainless |





ROCKWELL SECURITY- HEAVY DUTY 4 BAR HINGE

SPECIFICATIONS

General Description

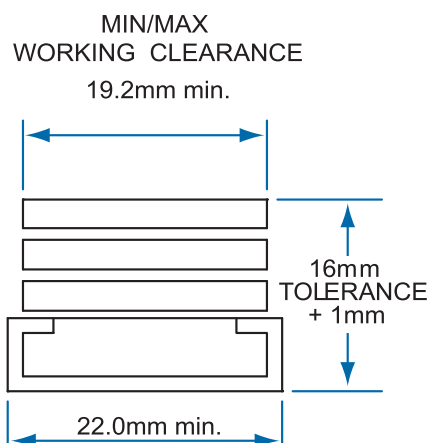
Rockwell Heavy Duty 4 Bar Hinge in stainless steel to meet toughest coastal applications.

Rockwell Top Hung hinges have an adjustable opening stop. Rockwell Side Hung hinges open to about 90 degree for easy clean and egressed functions.

Easy to install with an adjustable friction mechanism to ensure smooth operation. Meets US AAMA 904.1 standards.

General Description

TEST: Endurance tested to 10,000 cycles to AAMA 904.1 standards



EXAMPLE:
16mm STACK
MIN. 16mm
MAX. 17mm



Technical Data for Heavy Duty Hinges

| Top Hung | Normal Size | Opening Angle | Max.Weigh in lbs. | Vent Max Height |
|-----------|----------------|---------------|-------------------|-----------------|
| HDFTH10 | 10" (259mm) | 50° | 58 lbs | 20" |
| HDFTH12 | 12" (259mm) | 50° | 73 lbs | 25 " |
| HDFTH16 | 16" (412mm) | 50° | 99 lbs | 40 " |
| HDFTH22 | 22" (558mm) | 45° | 129 lbs | 60" |
| HDFTH26 | 26" (558mm) | 30° | 234 lbs | 80" |
| HDFTH26SB | 26" (558mm) | 15° | 224 lbs | 80" |

| Side Hung | Normal Size | Opening Angle | Max.Weigh in lbs. | Vent Max Height |
|-----------|----------------|---------------|-------------------|-----------------|
| HDFSH10 | 10" (259mm) | 85° | 83 lbs | 26" |
| HDFSH16 | 16" (412mm) | 90° | 103 lbs | 33 " |

SLIDING GLASS DOOR KIT



2 x SR1000DRBS
Sliding Door Roller



2 x SR1000DSBS
Door Stop



1 x SR1000TKBS
Track 25mm x 84"



2 x SR1000ECBS
End Cap



1 x SR1000FGBS
Floor Guide



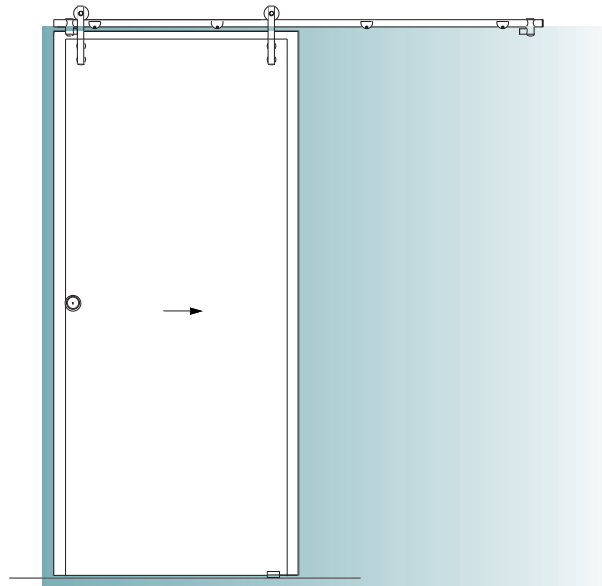
5 x SR1000WCBS
Wall Clamp



1 x SR1101RPBS
Recessed Pull



STAINLESS STEEL SLIDING GLASS DOOR SYSTEM



SR1000 Series

SPECIFICATIONS

Stainless Steel Construction

Glass Thickness: 10 - 12 mm

Maximum Glass Width: 36"

Maximum Weight: 80 Kg



Rockwell Security Inc.