

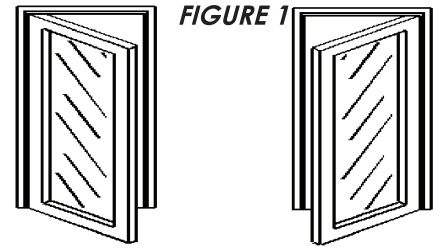
MULTIPOINT LOCK INSTALLATION INSTRUCTIONS

STEP 1. LATCH INSTALLATION INSTRUCTIONS

IMPORTANT-THE LATCH SIDE JAMB "Z" BAR HAS OPENINGS FOR DEADBOLT EXTENSIONS. THE WOOD IN THESE OPENINGS MUST BE REMOVED TO A MINIMUM DEPTH OF 3/4" BEFORE OPERATING THE MULTIPOINT DEADBOLTS WITH THE DOOR CLOSED. SEE STEP 3 OF THE INSTRUCTIONS.

****PLEASE READ INSTRUCTIONS BEFORE INSTALLING HARDWARE
HARDWARE SHOWN MAY VARY FROM ACTUAL PRODUCT

- From the outside of door, determine if your door is a right hinged or left hinged door. (See figure 1). The multipoint lock assembly has been *temporarily* preinstalled into your door as a left-hinged installation.
- If the latch bolt orientation of the multipoint lock is correct, go to Step 2. (See Figure 2). If your door is right hinged, the latch bolt must be reversed. Remove the multipoint lock assembly from the door by removing the six #8 phillips flat head screws. The multipoint lock assembly has a latch bolt screw visible on the side of the multipoint lock body. Remove the latch bolt screw, which will allow you to remove the latch bolt (see Figure 4). Turn the latch bolt over to the proper orientation for your door then re-install the latch bolt screw. Place the multipoint lock assembly back into the door. Lift up the lock assembly, align the square hole in the multipoint lock body with the round hole in the face of the door. Centerpunch and predrill six 1/8" holes on the edge of the door. Insert six #8 x 7/16" phillips flat head screws into the holes drilled in the edge of the door. **CAUTION: DO NOT OVERTIGHTEN AS THIS MAY CAUSE THE HARDWARE TO BIND.**



LEFT HINGED

RIGHT HINGED

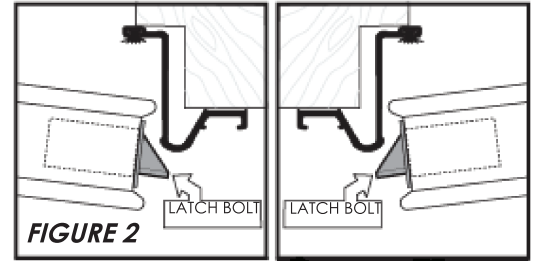
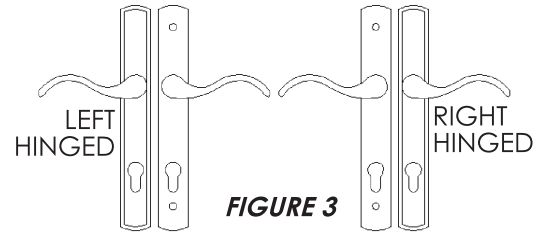


FIGURE 2

LATCH BOLT



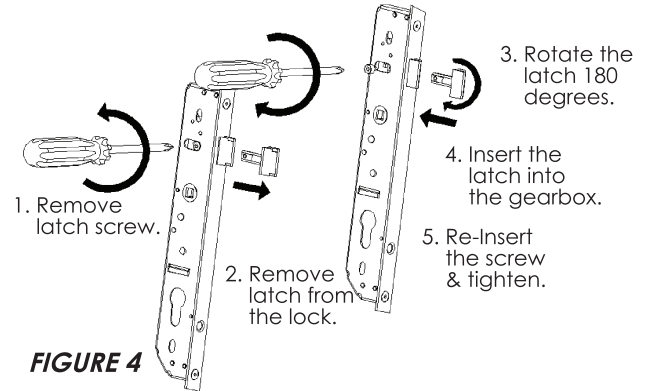
LEFT HINGED

RIGHT HINGED

FIGURE 3

STEP 2. HANDLE AND ESCUTHEON PLATE ASSEMBLY

- Attach the outside handle & trim plate.
 - Determine outside handle. See figure 3.
 - Assemble the outside handle, T-bushing(3), outside trim plate(9), and flat washer(4), (see figure 5).
 - Slide the "D" clip(5) onto the groove of the handle post, (see figure 5).
 - Insert the spindle(6) all the way into the outside handle. Tighten the set screw in the handle with the hex wrench.
- On the outside of the door install the outside assembly, making sure that the lever handle is facing in the correct direction, (see figure 9).
- On the inside of the door, position the inside handle, with T-bushing (3), through the inside trim plate (8) (polished surface facing out) over the square spindle, making sure that the inside lever is facing in the correct direction, (see figure 9).
- Align trim plates and finger-tighten the 2 #10-32 phillips pan head screws (1), through the top and bottom holes on the inside trim plate, (see figure 9).
- From the interior of the door, insert the key cylinder (12), through the hole in the lock body. Insure the thumb knob is on the interior side of the door. Insert the cylinder retaining screw(13), through the hole in the mortise plate and into the threaded hole in the key cylinder, and tighten, (see figure 9).
- Hold the handles tightly together and tighten set screw on inside handle with hex wrench.
- Tighten the 2 #10-32 phillips pan head screws (1). **CAUTION: DO NOT OVERTIGHTEN AS DOOR WALLS MAY BEND.**



1. Remove latch screw.

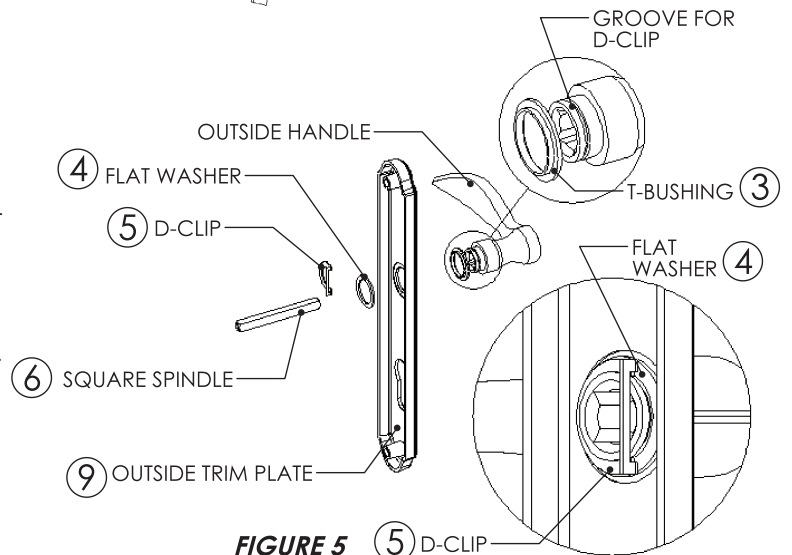
2. Remove latch from the lock.

3. Rotate the latch 180 degrees.

4. Insert the latch into the gearbox.

5. Re-insert the screw & tighten.

FIGURE 4



④ FLAT WASHER

⑤ D-CLIP

⑥ SQUARE SPINDLE

⑨ OUTSIDE TRIM PLATE

④ FLAT WASHER

⑤ D-CLIP

⑥ SQUARE SPINDLE

⑨ OUTSIDE TRIM PLATE

④ FLAT WASHER

⑤ D-CLIP

⑥ SQUARE SPINDLE

⑨ OUTSIDE TRIM PLATE

FIGURE 5 ⑤ D-CLIP

STEP 3. STRIKE INSTALLATION

1. With the door open extend the hooks by lifting up on the lever. Carefully close the door until the latch bolt and the top and bottom hooks make contact with the Z bar. With a pencil, mark the location of the latch bolt and the top and bottom of each hook on the Z bar. (See figure 7). Return the hooks to the fully retracted position by pushing down the lever.
2. Using a screwdriver and hammer, remove the three knockouts on the Z bar that align the pencil marks with the latch bolt and the two hooks.
3. Using a drill and chisel, clear the wood from all of the strike openings behind the Z bar a **minimum** of 3/4" deep. (See figure 6).
4. **Note : top and bottom hooks must have clearance on all four sides.** Position the strike plate slots vertically on the Z bar and align them with the pencil marks previously made on the Z bar. (See figure 8).
5. Position the strike horizontally by aligning the outside edge of the slot in the strike plates with the outside edge of the slots in the z-bar. Mark the hole locations in the center of the two adjustable slots of each strike plate. (See figure 8)
6. Remove the strike plates and drill the marked holes with a 3/32" drill bit. Reposition the strike and insert the #8 x 7/16 Phillips flat head screws (5) into the mounting holes and tighten. Close the door and check the operation of the lock. Lift the lever upwards to throw the hooks and then turn the cylinder to lock the door.
7. Check that all screws have been tightened.

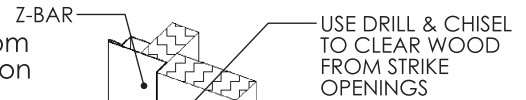


FIGURE 6

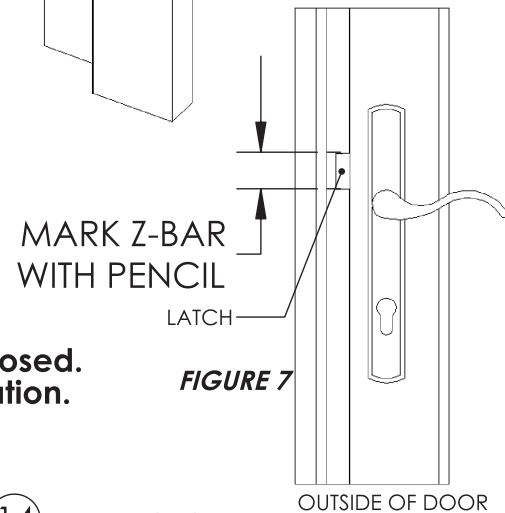


FIGURE 7

****Due to strength of hardware you may need to pull/push door closed.
Periodically check the mounting screws to ensure proper operation.

Trouble shooting:
Door will not lock.

The top and bottom hooks need to be deployed to lock the door. Lift the lever upwards to deploy the hooks, and turn the cylinder thumb towards the door jamb to lock. To unlock, turn the cylinder thumb away from the door jamb and push the lever downwards to unlock and open the door.

From the exterior side, lift the lever upwards to deploy the hooks, then insert key into the lock cylinder and turn key towards the jamb to lock the door. To unlock insert key into the cylinder and turn the key away from the jamb, then push the lever downwards to unlock the door.

Check to ensure the top and bottom hooks are deployed into the Z bar. Failure of the hooks to be fully deployed will not allow the multipoint to lock.

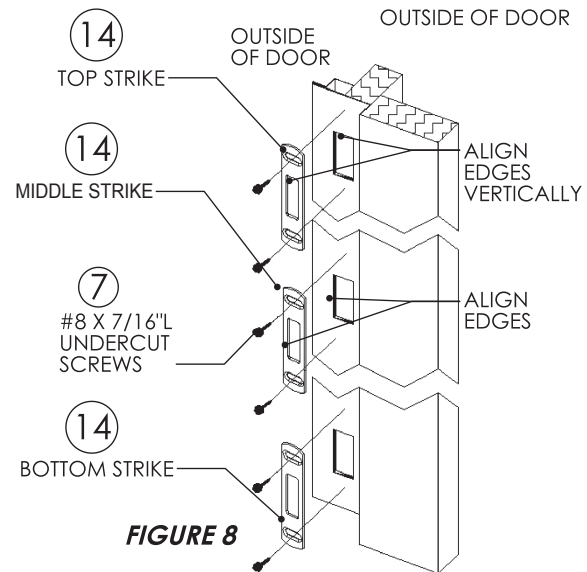


FIGURE 8

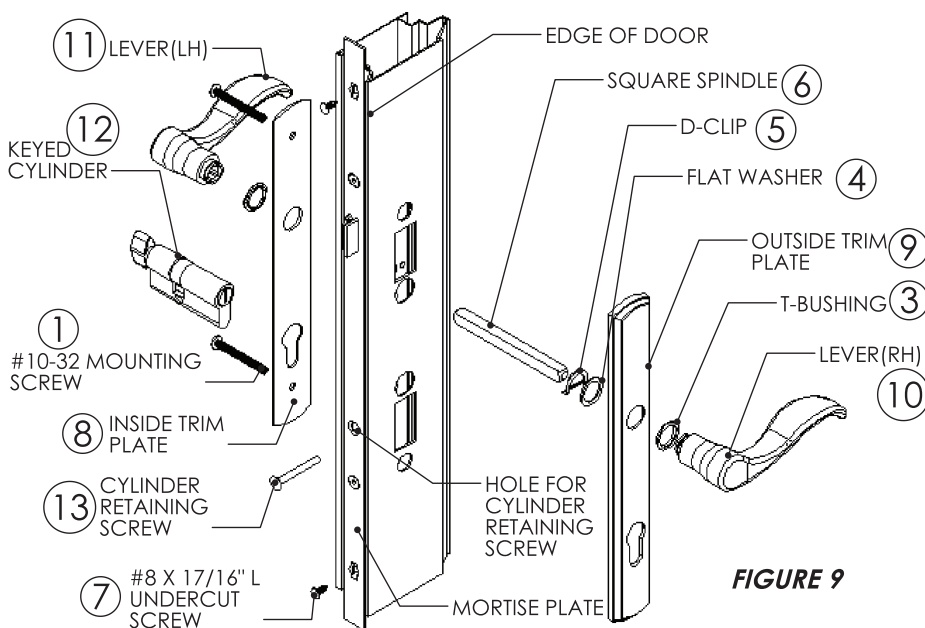


FIGURE 9

ITEM	DESCRIPTION	QTY
1	#10-32 X 1.75" L MOUNTING SCREWS	2
2	1/8" HEX WRENCH	1
3	T-BUSHING	2
4	FLAT WASHER	1
5	D-CLIP	1
6	SQUARE SPINDLE	1
7	#8 X 7/16" L UNDERCUT SCREWS	16
8	INSIDE TRIM PLATE	1
9	OUTSIDE TRIM PLATE	1
10	LEVER (RH)	1
11	LEVER (LH)	1
12	KEYED CYLINDER	1
13	CYLINDER RETAINING SCREW	1
14	TOP/MIDDLE/BOTTOM STRIKE	3