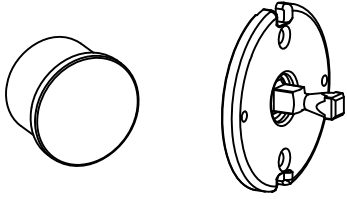




DUMMY HANDLE SET INSTALLATION INSTRUCTIONS

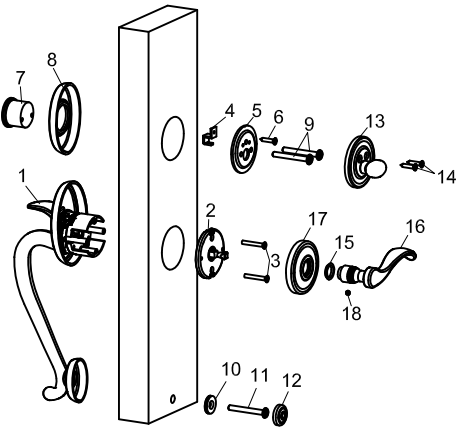


NOTE: For the dummy function installation, use the parts included in the dummy kit. These parts will substitute the entry function similar parts.

REQUIRED TOOLS

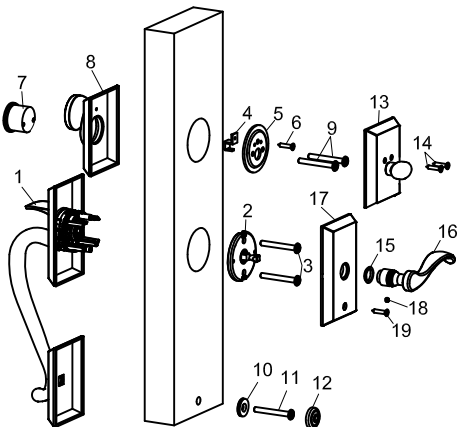
- Protective Eyewear
- #2 Phillips Screwdriver
- 1/8" Drill Bit
- Pencil

WINDSOR EXPLODED VIEW



- External Handle Assembly
- Dummy Adapter
- 1-1/2" Flat Head Machine Screws
- Dummy Bracket
- Turn piece Mounting Plate
- Dummy Bracket Screw
- Dummy Cylinder
- Cylinder Backplate
- 2" Pan Head Machine Screws
- Screw Cover Washer
- 2-1/2" Flat Head Machine Screw
- Screw cover
- Turnpiece Trim
- 1/2" Oval Head Machine Screws
- Plastic Washer
- Lever or Knob
- Internal Trim Plate / Rosette
- Set Screw
- Wood Screw (SAVOY only)

SAVOY EXPLODED VIEW

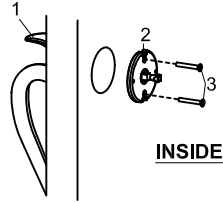


H100 INSTALLATION - WINDSOR



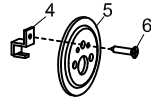
A. Hold the external handle assembly in place. Drive two 1-1/2" flat head machine screws through the dummy adapter and into the external handle assembly.

DO NOT OVER TIGHTEN THE SCREWS.



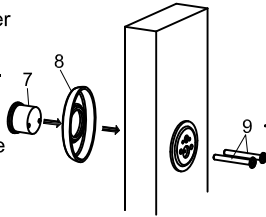
INSIDE

B. Secure the dummy bracket onto the turn piece mounting plate by driving the dummy bracket screw through the turn piece mounting plate and into the dummy bracket.

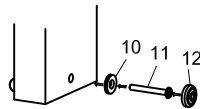


C. Insert the dummy cylinder through the cylinder backplate and into the door. Secure the dummy cylinder by driving two 2" pan head machine screws through the mounting plate and into the dummy cylinder.

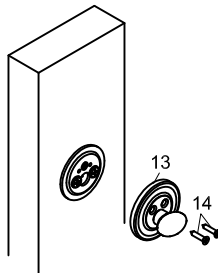
DO NOT OVER TIGHTEN THE SCREWS.



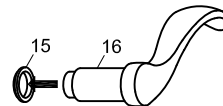
D. Insert the 2-1/2" flat head machine screw through the chamfered hole in the screw cover washer. Drive the screw with the washer through the door and into the bottom of the exterior handle assembly. Tighten screw and install screw cover.



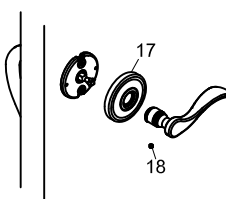
E. Position the turn piece trim plate over the mounting plate. Inserting the dummy bracket into the turn piece trim. Secure the plate by driving two 1/2" oval head machine screws through the two chamfered holes.



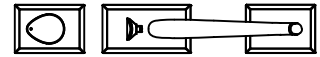
F. Place the plastic washer on the shank of the lever / knob.



G. Snap the rosette onto the adapter. Slide the lever / knob onto the adapter. Make sure there is not a gap between the knob/lever and the rosette. Insert and tighten the set screw with the Allen wrench provided.

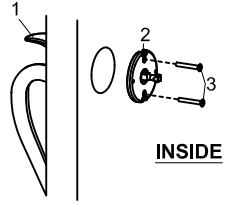


H300 INSTALLATION - SAVOY



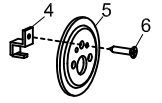
A. Hold the external handle assembly in place. Drive two 1-1/2" flat head machine screws through the dummy adapter and into the external handle assembly.

DO NOT OVER TIGHTEN THE SCREWS.



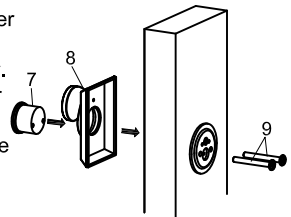
INSIDE

B. Secure the dummy bracket onto the turn piece mounting plate by driving the dummy bracket screw through the turn piece mounting plate and into the dummy bracket.

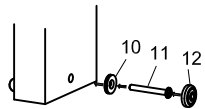


C. Insert the dummy cylinder through the cylinder backplate and into the door. Secure the dummy cylinder by driving two 2" pan head machine screws through the mounting plate and into the dummy cylinder.

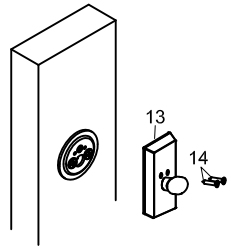
DO NOT OVER TIGHTEN THE SCREWS.



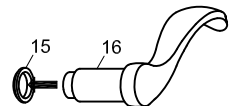
D. Insert the 2-1/2" flat head machine screw through the chamfered hole in the screw cover washer. Drive the screw with the washer through the door and into the bottom of the exterior handle assembly. Tighten screw and install screw cover.



E. Position the turn piece trim plate over the mounting plate. Inserting the dummy bracket into the turn piece trim. Secure the plate by driving two 1/2" oval head machine screws through the two chamfered holes.



F. Place the plastic washer on the shank of the lever / knob.



G. Snap the internal trim plate onto the adapter and secure the plate with the wood screw provided. Slide the lever onto the adapter. Make sure there is not a gap between the knob/lever and the trim plate. Insert and tighten the set screw with the Allen wrench provided.

