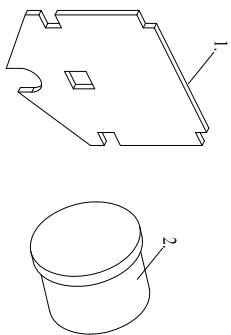




## DUMMY FUNCTION INSTALLATION INSTRUCTIONS



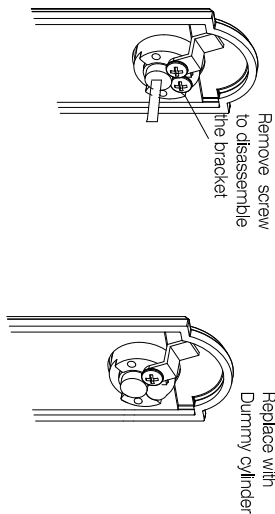
- Dummy Conversion Parts Kit**
1. Dummy Plate
  2. Dummy Cylinder Housing

1. The Monaco Dummy Handle set requires a double bore. Using the Paper Template, carefully pencil and using a proper boring tool, bore the double bore on the face of the door. **CHECK POSITION RELATIVE TO THE ACTIVE DOOR ENSURING THEY LINE UP.** If the door already has a double bore, proceed to step 2.



BORE ON DOOR  
Measure from top bore center to 5-1/2" below and pencil mark

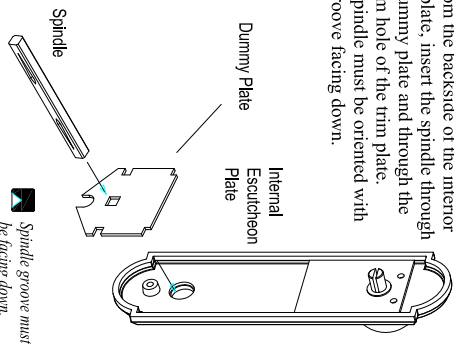
2. Take the External Handle assembly and replace the keyed locking cylinder with the dummy cylinder housing by unscrewing the screw on the keyed cylinder assembly to disassemble the bracket. Swap the keyed cylinder housing with the dummy cylinder housing and reassemble with the bracket and screw.



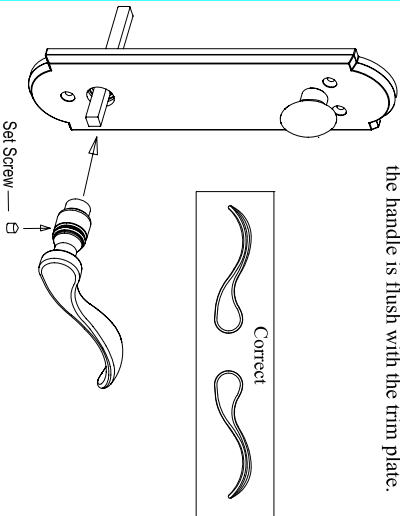
3. Place the plastic washers on the shank of both levers.



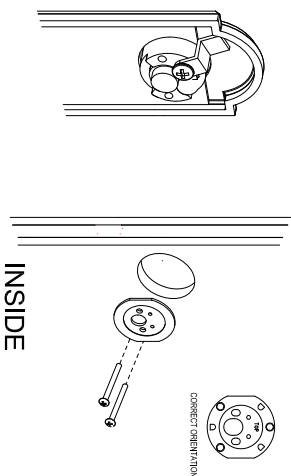
4. From the backside of the interior trim plate, insert the spindle through the dummy plate and through the bottom hole of the trim plate. The spindle must be oriented with the groove facing down.



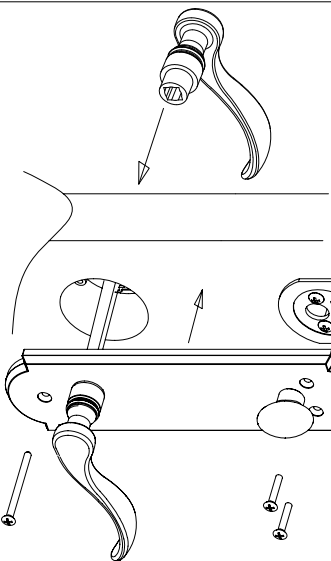
5. Match the lever, orient the lever to the correct orientation and slide the lever onto the spindle, by about 1/4". Insert and tighten the set screw with the Allen wrench provided to secure the handle. Ensure the handle is flush with the trim plate.



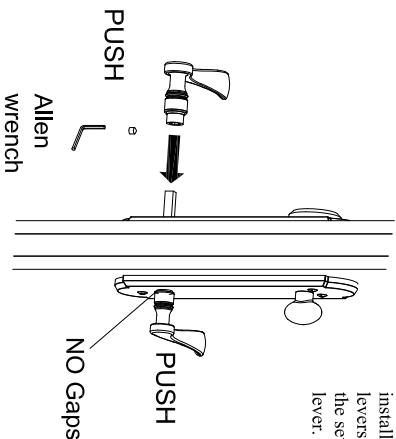
6. Take the External Trim Assembly and secure in place by installing the two 2" pan head machine screws through the deadbolt mounting plate and into the dummy cylinder housing.



7. Align the top 2 screw holes of interior trim with the deadbolt mounting plate. Secure the interior trim in place by installing the two 1" oval head machine screws through the top two screw holes. Install the 2-1/4" oval head machine screw through the bottom screw hole on the interior trim.



8. Slide the exterior lever (with plastic washer installed) onto the spindle, while holding the internal lever. Keep the levers snugly against their respective escutcheon. Insert and tighten the set screw with the Allen wrench provided to secure the external lever.



INSIDE

NOTE: ALWAYS WEAR PROTECTIVE EYEWEAR/GLOVES