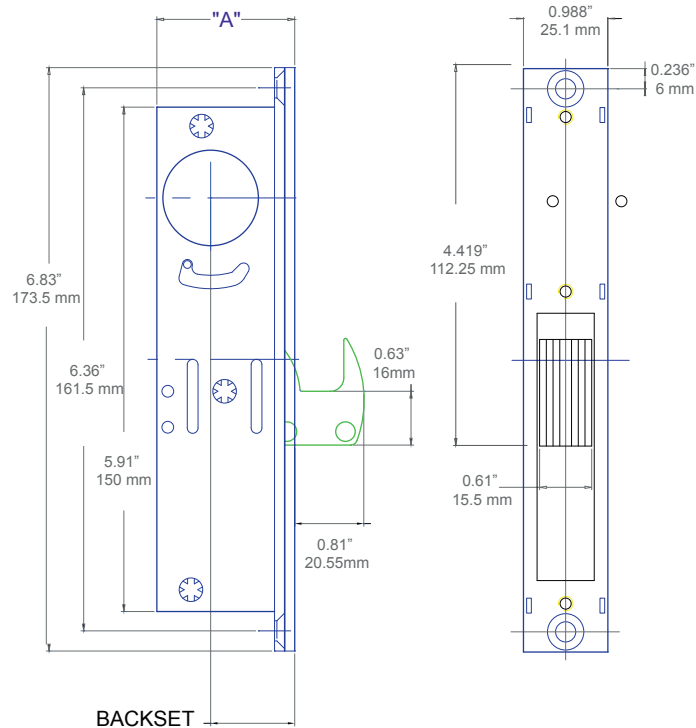




Stainless Steel Mortise Deadlocking Hook Bolt Lock

0950041



General Description

Heavy Duty All Stainless Steel construction Mortise Hook Bolt Lock for commercial applications.

6 ply laminated stainless steel hooks provide security and prevents forced entry. The laminated stainless steel hook bolt is 5/8" thick x 1-3/8" and has a 13/16" throw. The hook also has anti-saw feature for additional security.

The mortise lock works with a standard 1-5/32" diameter keylocking mortise cylinder on both sides or a keyed cylinder on the external side and a Thumbturn cylinder on the internal side.

The Mortise Lock housing and internal components are manufactured from 300 series Stainless steel for the toughest applications.

The Mortise Hook Bolt Lock is available with numerous faceplates to fit multiple applications.

Specification:

Housing: 300 series Heavy Gauge Stainless Steel

Hook Bolt : 300 series 6 Ply Laminated Stainless Steel
5/8" x 1-3/8" x 13/16"

Internal Components: 300 Series stainless steel

Backset: 31/32 or 1-1/8"

Cylinder: Lock Accepts Standard 1-5/32" mortise cylinders

Faceplate: 1" W x 6-7/8" L

BACKSET	"A"	PART NUMBER
31/32"	1.63"	09500041
1-1/8"	1.78"	09500042
1-1/2"	2.25"	09500152