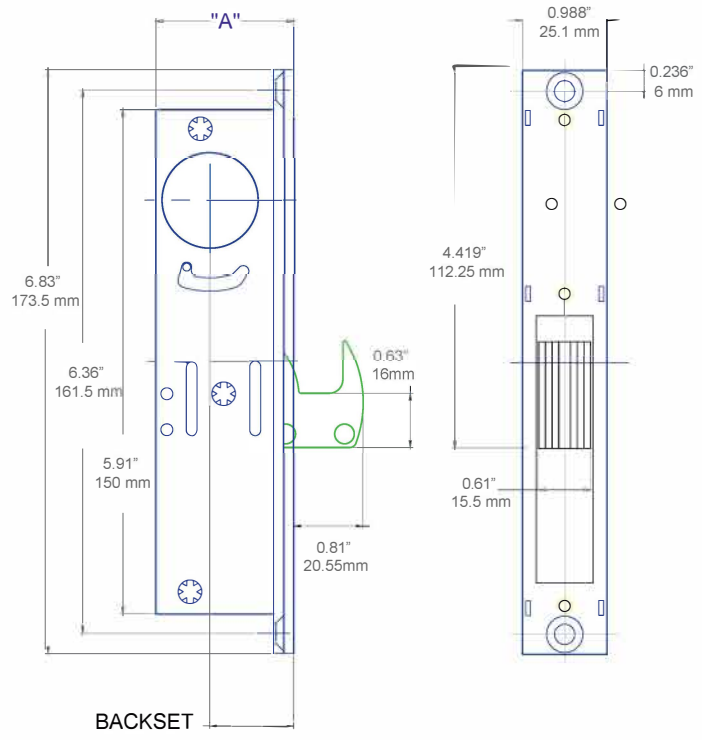




Rockwell Mortise Deadlocking Hook Bolt Lock

09500040



General Description

Heavy Duty Steel construction Mortise Lock with All Stainless Steel Hook Bolt for commercial applications.

6 ply laminated all stainless steel hooks provide security and prevents forced entry. The laminated stainless steel hook bolt is 5/8" thick x 1-3/8" and has a 13/16" throw. The hook also has anti-saw feature for additional security.

The mortise lock works with a standard 1-5/32" diameter keyed mortise cylinder on both sides or a keyed cylinder on the external side and a Thumbturn cylinder on the internal side.

The Mortise Lock housing and internal components are heavy gauge steel construction where the hook bolt is all stainless Steel.

The Mortise Hook Bolt Lock is available with numerous faceplates to fit multiple applications.

Specification:

Housing: Heavy Gauge Steel in Zinc plated /Passivated finish

Hook Bolt: 300 series 6 Ply Laminated Steel , 5/8" x 1-3/8" with 13/16" throw

Internal Components: Steel

Backset: 31/32

Cylinder: Lock Accepts Standard 1-5/32" mortise cylinders

Faceplate: 1" W x 6-7/8" L

BACKSET	"A"	PART NUMBER
1 1/8"	1.78"	SFHBST118