



Mortise Cylinder & Thumbturn

TH1100-ZC CYLINDER

DIAMETER: 1-5/32"

5 PIN mortise keyed cylinder SC1 Keyway

CAM: MS-type cam

FINISHES: Aluminum and Bronze

FUNCTIONS: Keyed, Privacy-thumbturn or dummy

Available in singles or pairs keyed differently
or keyed alike

Supplied with trim ring 1/4" thick

Mortise Cylinder Specifications

Construction: Zinc diecast housing

Mortise Shell cover - Aluminum Anodized Cover

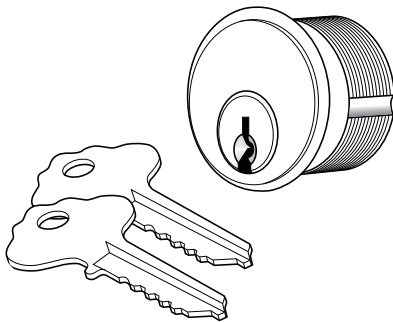
Keys: Solid Brass Nickel Plated Keys

Trim Ring: Extruded or Stamped Aluminum

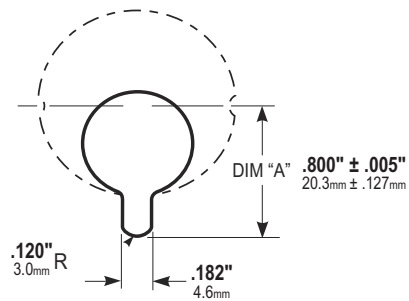
Thumbturn: Zinc diecast

5 pin cylinder with SC1 keyway, pin depths and increments.

Cylinder length: 1"



MS Cam details



TH1100-ZT THUMBTURN

DIAMETER: 1-5/32"

CAM: MS-type cam

FINISHES: Aluminum and Bronze

FUNCTIONS: Keyed, Privacy-thumbturn or dummy

Available in singles or pairs keyed differently
or keyed alike

Supplied with trim ring 1/4" thick

Mortise Cylinder Specifications

Construction: Zinc diecast housing

Mortise Shell cover - Aluminum Anodized Cover

Trim Ring: Extruded or Stamped Aluminum

Thumbturn: Zinc diecast

MS Cam details

