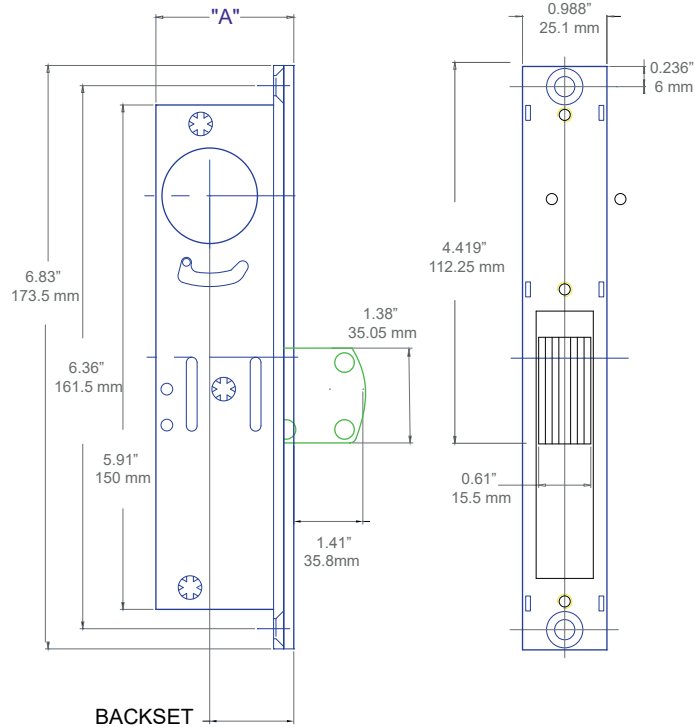




Rockwell Mortise Deadlocking DeadBolt Lock

TH1101-1-1/8



General Description

Heavy Duty Steel construction Mortise Deadbolt Lock for commercial applications.

5 ply laminated stainless steel Plates provide security and prevents forced entry. The laminated stainless steel deadbolt is 5/8" thick x 1-3/8" and has a 1.41" long throw. The Deadbolt also has anti-saw feature for additional security.

The mortise lock works with a standard 1-5/32" diameter mortise cylinder on both sides or a keyed cylinder on the external side and a Thumbturn cylinder on the internal side.

The Mortise Lock housing and internal components are heavy duty steel construction.

The Mortise DeadBolt Lock is available with numerous faceplates to fit multiple applications.

Specification:

Housing: Steel in Zinc plated

DeadBolt: 5 Ply Laminated Steel

Internal Components: Steel

Backset: 1-1/8"

Cylinder: Lock Accepts Standard 1-5/32" mortise cylinders

Faceplate: 1" W x 6-7/8" L

Lock Bolt: 5/8" x 1-3/8" with 13/16" throw 5 Ply laminated stainless steel with Anti-Saw feature.

BACKSET	"A"	PART NUMBER
1-1/8"	1.78"	TH1101-1-1/8